

FREE
ON NEWSSTANDS



Lake Panorama TIMES

A BIG GREEN UMBRELLA MEDIA PUBLICATIONWWW.LAKEPANORAMATIMES.COMDECEMBER 2021 | VOLUME 52 | NUMBER 12

ANNUAL STOCKING PROMISES BETTER FISHING OPPORTUNITIES

Fish stocking totals for 2021 included 2,500 walleye, 1,000 smallmouth bass, 2,000 largemouth bass and 2,085 perch.

BY SUSAN THOMPSON
Lake Panorama Times

More than \$18,000 worth of fish has been added to Lake Panorama by Fin and Feather in two different deliveries this fall. Fish stocking totals for 2021 included 2,500 walleye, 1,000 smallmouth bass, 2,000 largemouth bass and 2,085 perch.

Fin and Feather stocks fish that range from 3 inches to 8 inches in length, depending on the species, to promote high survival rates. Fingerlings are less expensive, but survival rates are lower. Experience has shown group leaders that stocking larger fish is a good investment.

Volunteers in the non-profit Fin and Feather group have been stocking fish and working to improve fishing conditions in Lake Panorama since 1984. When the dam was closed in 1970, the only thing natural to the lake was crappie, largemouth bass, carp and catfish.

The long-time supplier for the fish-stocking program is North Star Fish Hatchery, a third-generation, family-owned business in Montour, Iowa. North Star brought the fish to Lake Panorama's Boulder Beach, where the fish were introduced into the lake via a tube attached to the water-filled truck. Some also were dropped into the lake from nets used to scoop them out of tanks in the truck.

Besides stocking fish, the group helps improve fish habitat and sponsors an annual fishing derby for children during Panorama Days. Fin and Feather raises its money through annual memberships and a fundraising banquet each spring.

The 2022 banquet is scheduled for Saturday, May 14, the same date as the LPA annual meeting. The event will be held at the Lake Panorama National conference center, with social hour at 5 p.m. and dinner at 6 p.m. ■



More than \$18,000 worth of fish were added to Lake Panorama this fall. Shown here is a net full of largemouth bass fingerlings. There were 2,000 largemouth bass added to the lake this year.



Some of the 1,000 smallmouth bass added to Lake Panorama this fall are shown. Fin and Feather stocks fish 3-8 inches in length to promote high survival rates.



The long-time supplier for the fish-stocking program is North Star Fish Hatchery. North Star brought the fish to Lake Panorama's Boulder Beach, where the fish were introduced into the lake via a tube attached to their truck and nets dipped into tanks on the truck.

2022 golf memberships are now available

A payment program is available for all golf membership categories, plus the LPN pool and fitness center.

BY SUSAN THOMPSON
Lake Panorama Times

Anyone who was a golfing member of either Panorama West or Lake Panorama National in 2021 will receive 2022 golf membership applications and related information about the 2022 season in their mailbox. Application forms also are available online and in the LPN pro shop.

There are two golf courses at

Lake Panorama, both offering annual memberships. Lake Panorama National is an 18-hole course located on the east side of Lake Panorama. Panorama West is a nine-hole course on the west side of the lake. Both courses are owned by the Lake Panorama Association and managed by Lake Panorama National.

Annual memberships are available at both courses for both Lake Panorama Association property owners and

those who are not LPA property owners. All memberships include free use of the Lake Panorama National driving range.

In an effort to expand membership access to LPN amenities, a payment program is available for all golf membership categories, plus the LPN pool and fitness center.

Those interested can pay their 2022 membership choices automatically through their bank account.

Starting March 20, 2022, and ending Aug. 20, 2022, memberships will be withdrawn in six equal payments from their bank account. For this service a convenience fee of \$100 will be charged with the first withdrawal. An authorization agreement is included in the 2022 membership mailing and also online and in the LPN pro shop.

There are several membership options. The All-Inclusive Resort and Golf membership

includes golf at both courses, plus unlimited use of the driving range, pool and fitness center at Lake Panorama National Resort.

For LPA property owners, prices for the all-inclusive membership are \$3,381 for a family, \$2,824.50 for a couple, and \$2,149.50 for an individual. This membership option also is available to non-LPA property owners at the prices of \$3,739, \$3,186 and \$2,512.

A Lake Panorama Nation-

al 2022 membership for LPA property owners is priced at \$2,310 for families, \$1,963 for couples, \$1,500 for an individual, and \$385 for junior golfers younger than the age of 18. This membership for non-LPA property owners costs \$2,540 for families, \$2,194 for couples, \$1,732 for individuals and \$385 for juniors.

For LPA property owners joining at Panorama West, fees

GOLF, PAGE 3

Protect: 1 Your car.
2 Your house.
3 Your bank account.

Save an average of \$894.*

Protect yourself with America's #1 car and home insurance company.**
Like a good neighbor, State Farm is there.®
CALL ME TODAY.



*Average annual household savings based on national 2016 survey of new policyholders who reported savings by switching to State Farm.
**Based on A.M. Best written premium.

State Farm Mutual Automobile Insurance Company, State Farm Indemnity Company, Bloomington, IL
State Farm Fire and Casualty Company, State Farm General Insurance Company, Bloomington, IL,
State Farm Florida Insurance Company, Winter Haven, FL, State Farm Lloyds, Dallas, TX



Robert Carr Insurance Agcy Inc
Robert Carr, Agent
111 S. 4th Street
Guthrie Center, IA 50115
Bus: 641-332-2263

Guthrie County's Best Kept Secret

Art on STATE

320 State St, Guthrie Center 641-332-2267 Tuesday-Friday 10AM-5PM & Saturday 10AM-4PM

Hand Crafted, One-of-a-Kind Gifts, Decor and Furniture

PROFESSIONAL TREE SERVICE

HANSEN TREE SERVICE

TREE PROFESSIONALS • ADAIR, IA

Owner Kyle Hansen

REMOVALS • STUMP SERVICE • TRIMMING • PLANTING

Call or Text: 712.254.3732

hansentreeserviceia@gmail.com

May your holidays be merry & bright

Guthrie County REC

A Touchstone Energy® Cooperative

1406 State Street, Guthrie Center

641-747-2206 • 888-747-2206

www.guthrie-rec.coop

ON THE LAKE

A NEW FILM COLUMN,
BUSINESS PAGE FEEDBACK
AND A STURGEON?

BY SHANE GOODMAN
Editor and Publisher

What was the last movie you saw at a theater? If you are like me, you really have to think for a bit before answering that. Due to the pandemic, many of us have opted to stream movies at home, using a variety of services. Meanwhile, I do miss going to the theater and watching the latest releases on the big screen with a tub of buttery popcorn and a box of Milk Duds.

Regardless of where you watch, there is no denying that movie-viewing is one of America's favorite pastimes. So with that in mind, I was intrigued when Michael C. Woody reached out to me with the idea of having him write film reviews from a local perspective for the Lake Panorama Times. It sounded like a great idea to me, so you will find his first installment this month. I hope you give it a thumbs up.

'Twas the night before

If you are looking for a wonderful Christmas story to warm the hearts of the young and old alike, then be sure to check out CITYVIEW magazine this month where you will find Bob Hullihan's classic story of the waterbug, a pair of silverfish, a young spider, three ladybugs, a cricket and a trouble-making mouse that teach us all a thing or two about genera-

tional differences and tradition. Pick up a copy of the magazine on the stands or check out the story online at www.dmcityview.com.

Jamie Pollard

Most of you know that Iowa State University athletic director Jamie Pollard and his wife Ellen are lake residents. And most of you know that Jamie recently announced his cancer diagnosis while also stressing the importance of early detection. Please join me in keeping Jamie and his family in your thoughts and prayers.

Business page submissions

Several of you have commented on how you appreciate the addition of our business page to Lake Panorama Times. I appreciate the feedback as we continue to grow our coverage of the local business community, in addition to lake residents who own or operate businesses. I welcome your story ideas, as well as any news brief items that you would like us to include. You can submit on our website at www.lakepanoramatimes.com or email directly to me at shane@dmcityview.com.

A few lake chuckles

My friend Bill was standing on the edge of Jones Cove at Lake Panorama. I yelled over to him, "How do I get to the other side?" He replied, "You



Shane Goodman

are on the other side." Uggh. Want some more? Here's a little humor for your friends in the medical industry. Ask them, "Who carries out operations in a lake?" The answer? A sturgeon, of course.

And finally, we don't have mountains in Iowa, but many of you do enjoy the scenery around mountain lakes in other locations. In fact, some of you say they are absolutely gorges.

More of this kind of stuff

If you enjoy my monthly musings, you can read similar columns by subscribing to our free email newsletter, The Daily Umbrella, delivered via email each weekday morning. Sign up at www.thedailyumbrella.com. Merry Christmas to all of you, and, as always, thank you for reading. ■

Shane Goodman
Editor and Publisher
shane@dmcityview.com
515-953-4822, ext. 305

THERE'S NO PLACE LIKE A NEW HOME FOR THE HOLIDAYS...

Wishing You Happy Holidays this Season

Kyle Olson
Broker
515-570-1100
kyle.olson@exitrealtyfrontier.com

EXIT COUNTRY REALTY
MLS member covering most of Southwest Iowa.
Licensed to sell real estate in the state of Iowa. Not intended to solicit buyers or sellers currently under contract with a brokerage.

Brandy Clark
Realtor®
712-790-7283
brandy@exitcountryrealty.com

GOLF

FROM PAGE 1



With the 2021 golf season in the rearview mirror, it's time to start thinking about the 2022 season. Membership information has been mailed to all 2021 members of both Lake Panorama National and Panorama West. Details for 2022 memberships also are available on the LPN website.

are \$721 for a family, \$566.50 for a couple, \$412 for an individual and \$103 for a junior. For non-LPA property owners, Panorama West memberships cost \$824, \$669.50, \$515 and \$103 for those same four categories.

A special "first time" membership is available for those who have never been a Lake Panorama National member. The cost of this membership for a family is \$1,155, for a couple it is \$982, and for an individual, the cost is \$750. LPN members who refer a "first time" person who joins will receive \$50 in LPN pro shop credit.

Finally, distance memberships at Lake Panorama National are available for people who do not own a home at Lake Panorama, and who live more than 18 miles from the LPN. This membership costs \$1,964 for a family, \$1,617 for a couple, and \$1,068 for an individual.

Memberships for the swimming pool and fitness center at the LPN also are listed on the 2022 membership applications.

Those using private carts on either golf course must pay a trail fee. At the LPN, members have the option of a cart lease, which entitles one person to a seat on an LPN cart for the season.

Other services listed on the membership form are cart storage at both courses, plus bag storage and a USGA handicap at the LPN. Those who play in the LPN's leagues and handicap tournaments must pay the \$30 handicap fee. This fee is not required for Panorama West leagues.

Those who choose the all-inclusive membership and pay in full by Jan. 31, 2022, will receive a \$125 LPN gift card. LPN golf memberships paid in full by Jan. 31, 2022, will receive a \$100 LPN gift card. Panorama West golf memberships paid in full by the same date will receive a \$25 LPN gift card.

As an extra incentive to pay in 2021, all memberships paid by Dec. 31, 2021, will be entered into a drawing. Prizes awarded will include a driver and fairway wood combo valued at \$850; \$500 in LPN Diners Club credit; Bushnell range finder valued at \$300; a Michael Kleinwolterink print valued at \$200; three-dozen Titleist custom golf balls valued at \$180; a 2022 single LPN pool and fitness membership valued at \$350; and a nine-hole playing lesson with Rob Riggins, LPN head golf professional.

Membership forms are online at www.lakepanoramainational.com/membership. ■

FILM REVIEWS

From the story of Princess Diana to an Oscar-worthy performance by Lady Gaga

Six movie previews to whet your film appetite for the season.

BY MICHAEL C. WOODY

The holiday season is upon us, and that can only mean one thing...big movies! And what we in the biz call...important movies. The pandemic has again taken its toll on our movie selection this year, but I will bring you up to speed as best I can.

"SPENCER"

This is an "arty" look at the weekend when Princess Diana allegedly decided to divorce her husband. Director Pablo Larrain delivers a movie that is, at times, difficult to watch and even more difficult to understand. He gave us a similar look at Jackie Kennedy in the 2016 film "Jackie." This is a movie that is best appreciated but maybe not enjoyed. **Grade: B/B+**



"BELFAST"

This is one of the finest movies I have seen this year but good luck finding it at a theater. Last check it was playing at the Century 20 Jordan Creek in West Des Moines on only one screen. Writer/director Kenneth Branagh gives an emotional look at his growing up in Belfast, Northern Ireland, during the religious uprisings of the late 1960s. Shot in glorious black and white, this movie packs quite a punch on multiple levels. It is easily in the Top 5 movies of the year. **Grade: A**



"RED NOTICE"

Excuse me while I slip in one of those movies that you can enjoy on the streaming services at home. Netflix delivers a great cast of Dwayne Johnson, Ryan Reynolds and Gal Gadot in a movie about three people competing to steal a priceless heirloom. If you are looking for a break from using your brain for a couple of hours, you are in luck. This wannabe action film goes from dumb to dumber and never recovers. It manages, at times, to be mindless fun. Too many times for my taste. **Grade: C**



"GHOSTBUSTERS AFTERLIFE"

My wife and I are big fans of the 1989 original "Ghostbusters" film. It was one of our first dates. Nearly 33 years later, we are back at the movies to see "Afterlife," and I'm happy to report that it was a blast. A young struggling family inherits a rundown shack of a home in the middle of nowhere. Without giving too much away, strange things begin to happen, and I think you can guess where we go from there. I certainly saw better movies this year, but this was the most fun I had in a theater this year. **Grade: B+/A-**



"THE HOUSE OF GUCCI"

Directed by one of my favorites, Ridley Scott ("Alien," "Gladiator," etc.), "The House of Gucci" felt like a weak attempt to make "Godfather Part II." Trying to emulate one of the greatest films in history is admirable but fraught with issues. This is based on a true story of the famous fashion company with infighting, family issues (putting it mildly) and murder. Lady Gaga is tremendous (as in Oscar worthy) as a woman who marries into an exclusive but severely dysfunctional family. Oh, how I wish that this had been better. Scott has now disappointed me twice this fall with the earlier release, "The Last Duel." **Grade: B**



And finally...

"ENCANTO"

The 60th animated full-length motion picture from who else but Disney? As you might tell from the title, this is a magical story about a house that is given (out of nowhere) to a family who suffered a great tragedy. Members of the family are also given special gifts, or abilities. All members except one. When the house starts to crumble, this young woman is blamed for not being able to hold it together because she has no magical abilities. It's a fun story with above average voicework and is close to a perfect holiday movie for young families. **Grade: B/B+**



Have a great holiday season, and I'll be back in January with more hits and misses. ■

Michael C. Woody has been reviewing movies on radio and television since 1986 and can be heard talking movies every Wednesday afternoon at 2:30 p.m. on KXn0 106.3 with Keith Murphy and Andy Fales. You can also follow him on Twitter at MrMovieDSM. He and his wife Susan are residents of Lake Panorama.

Let us help you PLAN, DESIGN, MANAGE and BUILD your next project!



**NEW CONSTRUCTION • ADDITIONS • REMODELS
KITCHENS • BASEMENT FINISHES/RENOVATIONS**

Locally owned full-service construction company with more than 15 years experience in real estate and construction.

**SCHEDULE A FREE
CONSULTATION NOW!
515-370-5853**

LICENSED AND INSURED.

JRL Builders
CUSTOM HOMES
(515) 370-5853

Follow completed and in-progress projects at www.facebook.com/JRLBuildersIA

WWW.JRLBUILDERSIA.COM

FURRY FAMILY PHOTOS DRAWS 20 FAMILIES

A total of \$1,266 was raised to support the Lake Panorama dog park.



Tammy Deal and her dog Zoey are shown in the antique sleigh decorated for the holidays, loaned by Carol and Derek VanKirk.



Three photogenic dogs were included in this picture taken at the Furry Family Photos event Nov. 21. Pictured in the back row are Sherri Miller, grandson Lincoln, and Jacob Miller. Front row, left to right, Josef Miller with Lambeau, Sarah Bryan, and Eric Miller holding Apple. Maddux is on the right.

BY SUSAN THOMPSON
Lake Panorama Times

Twenty families took the opportunity to get photos with their pets Nov. 21 at the Furry Family photos event at Twin Vines. Brad and Ben Hayes, owners of Twin Vines, donated the use of their event venue for the fundraiser.

Freewill donations were given to Friends of Lake Panorama in exchange for volunteers snapping family photos with cameras and smartphones provided by a family member. A total of \$1,266 was raised to support the Lake Panorama dog park.

The Friends dog park task force organized the event. Committee mem-

bers decorated three areas at Twin Vines for the holiday photos. These included an antique sleigh near the red barn, loaned by Carol and Derek VanKirk; an antique truck, loaned by Dave Leonard, parked in front of a row of pine trees; and hay bales arranged in the entrance of the red barn bridge.

Construction on the dog park is nearing completion, with work on the entrance area and parking lot still to be done. The dog park will open sometime in 2022, once the turfgrass is well established. The park is located at the corner of Sage Trail and East RV Road on the east side of Lake Panorama and will be open to Lake Panorama property owners and their guests. ■



Karen and Reuben Hanson and their dog, Toby, pose with an antique truck loaned by Dave Leonard for the Furry Family Photos.



Based out of Guthrie Center, IA we specialize in custom built cabinets and homes designed exactly to your specifications. Providing quality you can count on with craftsmanship to last a lifetime!



RECIPE

RUSSIAN TEA CAKES



Sara Goodman and Lois Porath

BY JOLENE GOODMAN

I love to bake. And, I love to bake Christmas cookies. At this stage in life, I am learning to modify recipes to have less fat and sugar in them. I am, slowly, learning and applying these tricks. However, I am not willing to sacrifice the recipes and tastes of traditional Christmas cookies to save a few calories or worry about how healthy these treats are. There are just some things in life that are worth the splurge, and the holiday season is one of these times every year. Moderation helps.

So, baking lots of Christmas cookies and holiday treats is a tradition that takes place in our household. Our favorites include frosted sugar cookies (that is the No. 1 family favorite), spritz, Russian tea cakes, butterscotch corn flake balls, covered pretzels, pecan tassies, cinnamon-sugar trail mix and fudge (Shane's favorite). Other recipes come and go, but those are the mainstays. My favorite is the Russian tea cake cookie, and I have shared

the recipe here. All my recipes are, of course, my mother's. She was a great baker and cook, so I thank her for nurturing this love I have, and grateful for all the great recipes I am able to pass down to our daughters and you. Bake and enjoy! Merry Christmas! ■

Jolene Goodman is the advertising director for Lake Panorama Times and vice president of Big Green Umbrella Media.



Jolene Goodman

UPCOMING EVENTS



Submit items for UPCOMING EVENTS calendar at www.lakepanoramatimes.com. Event dates and times are subject to change. Contact hosts for updated details.

- No school
Friday, Dec. 10
www.panoramaschools.org
- Panora City Council meeting
Monday, Dec. 13, 6:30 p.m.
www.cityofpanora.com
- Panorama School Board meeting
Monday, Dec. 13, 6:30 p.m.
Board room
www.panoramaschools.org
- Panora City Council meeting
Monday, Dec. 13, 6:30 p.m.
www.cityofpanora.com
- LPA building codes meeting
Monday, Dec. 13, 7 p.m.
Lake Panorama National
www.lakepanorama.org
- LPA monthly board meeting
Tuesday, Dec. 14, 5 p.m.
Lake Panorama National
www.lakepanorama.org
- Annual LPN Holiday Brunch
Sunday, Dec. 19
10:30 a.m. to 1 p.m. with reservations
taken every half hour.
Reservations are required. Adults, \$24; kids
ages 5 to 12, \$11; ages 4 and younger, free.
Lake Panorama National Resort
641-755-2080
www.lakepanoramanational.com

- No school
Friday, Dec. 23-31
www.panoramaschools.org
- Noon Year's Eve Party for Kids
Friday, Dec. 31, 10 a.m. to 12:30 p.m.
\$15 per child. Cookie decorating, crafts,
milk and cookie toast at noon. Reservations
required.
Lake Panorama National, 641-755-2080
www.lakepanoramanational.com
- New Year's Eve Party for Adults
Friday, Dec. 31, 6 p.m.-Midnight
Singles \$50; Couples \$90. Appetizers, buffet,
chocolate fountain, party favors, dancing,
champagne toast. Reservations required.
Lake Panorama National, 641-755-2080
www.lakepanoramanational.com
- Panora City Council meeting
Monday, Jan. 10, 6:30 p.m.
www.cityofpanora.com
- Panorama School Board meeting
Monday, Jan. 10, 6:30 p.m.
Board room
www.panoramaschools.org
- No school
Friday, Jan. 14
www.panoramaschools.org

Russian Tea Cakes

- 1 cup soft butter
 - 1/2 cup sifted powdered sugar
 - 1 tsp vanilla
 - 2 1/4 cup sifted flour
 - 1/4 tsp salt
 - 3/4 cup chopped walnuts
- Mix together thoroughly: butter, powdered sugar and vanilla.
 - Sift together and stir in flour and salt.
 - Mix in ground walnuts.
 - Chill dough.
 - Roll into 1-inch balls.
 - Place on ungreased cookie sheet.
- Bake at 400 degrees for 10-12 minutes or until set, but not brown.
 - While warm, roll in powdered sugar.
 - Cool, then roll in powdered sugar again.
 - Makes 4 1/2 dozen. We always double this recipe.




Celebrate these GCSB SUPERSTARS!

DONNA BAKER AND BARB WOLLNER ARE RETIRING FROM GUTHRIE COUNTY STATE BANK

JOIN US FOR AN OPEN HOUSE to show appreciation for Donna and Barb as they wrap up their years of dedicated service to our customers, our team and our community!

Wed., Dec. 15 • 1:00 - 3:00 p.m.

Guthrie County State Bank • 505 E Main Street in Panora




GUTHRIE COUNTY STATE BANK

GCSBank.com

MEMBER FDIC

Guthrie Center
P.O. Box 8 • 413 State Street
Guthrie Center, IA 50115
PH: 641.332.2218
TF: 866.747.2218
FX: 641.332.2693
EM: gcsb@gcsbank.com

Panora
P.O. Box 757 • 505 East Main Street
Panora, IA 50216
PH: 641.755.2400
TF: 877.755.2400
FX: 641.755.2344
EM: gcsb@gcsbank.com



Tw'as the Day of Listing with Lake Panorama Realty
Tw'as the day of listing and all through my house,
Not a thing out of place, not even my spouse!
The listing pictures so perfect, a description accurate and complete.
An open house for tomorrow, hosted by John, Julie, Dee and Leel!
Then out on the porch there arose such a clatter,
I sprang from my chair to see what's the matter.
What to my wondering eyes did appear?
A bunch of anxious buyers, I could see them crowd near.
"We're here for the open house" their voices outburst!
"We wanted to be early so we could be first!"
And then in a twinkling we heard on the roof,
In a cloud of snow showers my agents appeared—poof!
Their eyes how they twinkled, their negotiating skills, so keen!
I knew in an instant we'd made the right choice with Lake Panorama Realty!
They gathered purchase agreements, and sent buyers on their way,
We reviewed all the offers without a delay,
Full price! Cash! No appraisal! We shouted with glee!
We chose the right offer; it was really so easy!
And I heard my realtors exclaim as they drove out of sight,
We love what we do and aim to delight!

Merry Christmas from Lake Panorama Realty!



Julie Wykoff
Broker/Realtor®
515-778-0053
julie@juliewykoff.com

John McDermott
Realtor®
641-431-0042
johnmcdermott641@gmail.com

Dee Powell
Owner/Realtor®
515-202-3312
deepowell@lakepanoramarealty.com

Lee Anne Howe
Realtor®
515-782-7688
leeannehowe@outlook.com



Scan this code to learn
Why Winter Listings Rule
Today



Office: 641-755-3276 | 505 E. Main Street, Panora | info@lakepanoramarealty.com | www.lakepanoramarealty.com
Licensed to sell real estate in Iowa. Not intended to solicit currently listed properties.

What’s happening at the LPN

Dec. 31 will bring events for both children and adults.

BY SUSAN THOMPSON
Lake Panorama Times

With the busy golf and banquet season in the rearview mirror, LPN staff members are making an extra effort to bring people into the conference center. The LPN, LLC is a wholly owned subsidiary of the Lake Panorama Association. As such, the LPA benefits when business is strong at the LPN.

Happy hour specials are available 4 p.m. to 6 p.m. Wednesday through Friday, with special pricing on seltzers, pints, well drinks and house wines.

A new Links menu launched in mid-November. It has many of the old favorites, while offering several new items that have become new favorites. In addition, a weekly features menu includes rotating items not on the regular menu.

A four-week trial offering Sunday breakfast began Nov. 14 and proved successful. The Sunday breakfast will continue for two additional Sundays, on Dec. 12 and Dec. 26. A separate breakfast menu is offered from 9 a.m. to 2 p.m., in addition to the regu-

lar menu available 11 a.m. to 4 p.m. A Bloody Mary and mimosa bar is open 9 a.m. to 4 p.m. at a cost of \$8 per drink.

A decision on whether to continue Sunday breakfast in 2022 is pending. Current Links kitchen hours are Wednesday through Saturday, 11 a.m. to 9 p.m., and Sunday 9 a.m. to 4 p.m. Watch the LPN Facebook page, LPN Resort Weekly newsletter or the LPN website for updates.

The annual LPN Holiday Brunch will be Sunday, Dec. 19, and include both breakfast and lunch items. Service will be from 10:30 a.m. to 1 p.m. with reservations taken every half hour. The cost is \$24 for adults, \$11 for children ages 5 to 12, with children ages 4 and younger free.

Dec. 31 will bring events for both children and adults. A Noon Year's Eve party for kids will include cookie decorating, crafts, activities, and a milk and cookie toast at noon. This party will be 10 a.m. to 12:30 p.m., at a cost of \$15 per child.

An adult New Year's Eve party in the banquet room will begin with a cash bar and hors d'oeuvres at 6 p.m. Buffet dinner stations will be open from 7 p.m.

to 9 p.m. A chocolate fountain buffet will remain open until 11 p.m.

A disc jockey will provide music throughout the evening, with dancing starting at 8 p.m. The cost is \$50 per person or \$90 per couple. Ticket prices include social hour appetizers, buffet, chocolate fountain, party favors, dancing, and a champagne toast at midnight. Room packages with LPN Resort accommodations are available that combine overnight lodging and admission tickets. Attendance is being capped at 200.

Reservations are required for both the Dec. 19 brunch and the Dec. 31 New Year's Eve parties. Call the LPN front desk at 641-755-2080. For more information on these and other LPN Resort events, check out the LPN calendar at www.lakepanoramana-tional.com/calendar.

The LPN staff is interested in feedback from members, including suggestions for future special events, menu items and anything else related to the LPN food and beverage department. Submit comments online at www.lpnresort.com/feedback. ■

COFFEE WITH THE LPA GM SCHEDULED FOR DEC. 9

John Rutledge, LPA general manager and LPN director of operations, invites LPA members to join him for coffee and other refreshments at this informal gathering on Thursday, Dec. 9. This event will be at the Lake Panorama National conference center, begin at 10:30 a.m., and will last about an hour.

At these coffees, Rutledge

provides an update on current happenings and takes questions from members in attendance. The main focus for the Dec. 9 session will be the 2022 LPA and LPN budgets, which received final approval at the LPA board's Nov. 23 meeting. Other topics will be projects being undertaken by the LPA, LPN and the Lake Panorama Rural Improvement Zone (RIZ).

If members have questions or items they would like covered about LPA policies or developments, they can email lpa@lakepanorama.org to give Rutledge an opportunity to prepare in advance. LPA members with questions specific to their own membership or property should call the LPA office during regular business hours at 641-755-2301. ■

DEC. 15 SET FOR LAUNCH OF NEW LPA WEBSITE

The private side of the website will be restricted to Lake Panorama property owners.

BY SUSAN THOMPSON
Lake Panorama Times

The Lake Panorama Association (LPA) plans to launch a new website Dec. 15, replacing the current site that has been in place since 2009. Over the years, the old website has become difficult to navigate, as additional information and features were added.

This new website will be simpler to use, while continuing to provide LPA staff the ability to communicate directly with members, and provide the important documents members need.

There will be both public and private sides. The home page on the public site will include information about Lake Panorama and the LPA. The private side of the website will be restricted to Lake Panorama property owners.

The website address will remain the same as the old site —www.lakepanorama.org. The home page will have tabs for “Resident Sign-Up” and “Resident Sign-In.” When the website launches, emails will be sent to all property owners who currently have an email address registered with the LPA office. This email will provide details on how to create an account and take members directly to the private side.

LPA members who have not registered for the current website won't receive an email invitation. They still will be able to set-up an account through the “Resident Sign-Up” option, and gain access to the private side of the website after being verified

as an LPA member.

Members must sign up to join the new site, this isn't something the LPA staff can automatically do. Members who do not sign up will no longer receive LPA's weekly email news bulletins or emergency bulletins, or be able to access LPA documents that will only be available on the private side of the website. For these reasons, the LPA staff is encouraging members to sign up immediately once they receive notice the new website is live.

The new website will not only make things easier and simpler for members, but will allow members to ensure their current contact information is up to date. It's important for LPA to know member email addresses and phone numbers, so staff can reach out with questions or concerns related to their Lake Panorama property. Members will have the option to share their contact information with other members that sign up. Contact information will not be shared unless members check the “Share Contact Information” box. This can be changed at any time.

“Members will be prompted to register via email, but they must complete the final step to ensure their information is up-to-date and they are in our system to receive weekly email bulletins and special announcements,” says John Rutledge, LPA general manager. “We appreciate the membership's patience and support as we both roll out the new website and make sure we have their contact information up to date.” ■

Lake Panorama Association Board of Directors Meeting Oct. 26, 2021 Lake Panorama Conference Center Approved Nov. 23, 2021

The Lake Panorama Association Board of Directors met Oct. 26, 2021, at 5 p.m. at Lake Panorama National Conference Center. Board members in attendance were Mary Jane Carothers, Emily Donovan, Gary Evans, David Finneseth, Rich Schumacher and Jim Spradling.

LPA Staff in attendance: Danna Krambeer, Corey Larson, Lane Rumelhart and John Rutledge.

Visitors in attendance: None

President Schumacher called the meeting to order at 5 p.m.

Agenda Item 1 – Approval of the Agenda

Donovan moved to approve the agenda. Motion seconded, carried unanimously.

Agenda Item 2 – Open Forum – No one present

Agenda Item 3 – Consent Agenda

Carothers moved to approve the consent agenda. Motion seconded, carried unanimously.

Consent agenda to include:

- LPA General Manager's Report
- Approval of minutes from 09.28.2021 LPA Board Meeting
- Acceptance of 09.30.2021 consolidated financial report – LPA & LPN, LLC
- Set date for next board meeting, 11.23.21
- Accept minutes from 09.27.2021 LPN LLC Board of Managers Meeting
- Accept minutes from 10.11.2021 Building Codes Committee Meeting
- Accept minutes from 10.12.2021 Water Safety Committee Meeting

President Schumacher moved to close session at 5:05 p.m. to discuss legal matters. Board exited closed session at 5:43 p.m.

Agenda Item 4a – Roof pitch variance Lots 887-890

From Building Codes Minutes:

Ryan and Sara Holz were represented by Nolan Clark, who requested a variance for a 4/12 roof pitch on a new home at 6025 Mason Drive (lots 887-890). The committee reviewed the plans for the home. Based on the fact the proposed home met all other requirements, held aesthetic integrity of LPA, and was similar to many previous requests, Westercamp made a motion to grant the request. Miller seconded, and the request was unanimously approved.

Finneseth moved to approve the variance request

for 4/12 roof pitch for new home to be constructed on combined lots 887, 888, 889 and 890, 6025 Mason Drive for Sarah & Ryan Holz as presented by plans provided. Motion seconded, carried unanimously.

Agenda Item 4b – Updated building permit fees as recommended by the building codes committee

The building codes committee has recommended a revised Building Permit. The revised building permit has three objectives: to adjust the fee prices, reorganize the fee schedule, and put an emphasis on recovering road fees. The Building Permit Application has not been updated since 2019. The revised permit has been reorganized, and some fees have been increased. Other fees and deposits have remained at the same price. New deposits have been recommended, along with new fee structure to cover road repair for larger home and addition projects.

Evans moved to adopt the concept of the revised Building Permit Application forms and corresponding fees, authorizing LPA management to revise wording as needed, effective Nov. 15, 2021. Motion seconded, carried unanimously.

Agenda Item 4c – Confirm no changes to lake buoy map for 2022

The water safety com-

mittee met in October. After hearing and discussing a couple of suggestions regarding the buoys, the committee recommended no changes to the buoy map for 2022.

Spradling moved to approve the lake buoy map for 2022 with no changes. Motion seconded, carried unanimously.

Agenda Item 4d – Rule change to 5.2(a) and 5.2(b) – Eliminate references to cubic inches and cubic centimeters – combined with 4e.

Agenda Item 4e – Addition of Rule 5.2(h) – temporary ban on electric powered vessels until rules on electric power are developed

From Water Safety Committee Minutes

Rutledge proposed a rule amendment to 5.2 (a) and (b), and a new rule be added, 5.2 (h). The rule amendments will simplify engine requirements. The added rule will ban electric vessels from Lake Panorama until further research can be done to compare horsepower to wattage. Behrends moved to accept the rule amendments as recommended by LPA Management to simplify horsepower and liter requirements, and to temporarily ban electric vessels until more research can be done to find acceptable engine limits for electric watercraft. Spradling seconded, and unanimously approved. (Strikethrough deleted and underlined added.)

5.2 BOATS AND PERSONAL WATERCRAFT EQUIPMENT SPECIFICATIONS AND LIMITATIONS

- Engine Size Limit-Boats (non-pontoon type)

In the interest of safety and general welfare of the membership of the Lake Panorama Association, no boat that has an engine displacement in excess of 6.2 liter/377 mag. i. will be registered or permitted to operate on Lake Panorama. If a boat

has multiple engines, the total displacement of all engines shall not exceed 5.8 6.2 liter/351 mag. c.i.. EXCEPT that boats with engine displacements in excess of 5.8 6.2 liter/351 mag, c.i. that were registered and permitted to operate on the lake in the calendar year 1988, and have been registered each year thereafter, shall be exempt from this provision.

- Engine Size Limits—Personal Watercraft (PWC)
- No 2-cycle engine personal watercraft that has an engine in excess of 130hp /1100cc. shall be registered or permitted to operate on Lake Panorama.
- No 4-cycle engine personal watercraft that has an engine in excess of 185hp/1500cc. shall be registered or permitted to operate on Lake Panorama.
- Electric Powered Vessels

All electric powered vessels and watercraft shall be prohibited until LPA implements detailed rules regarding all electric motors. This rule does not prohibit the use of electric trolling motors.

Finneseth moved to adopt rule changes to sections 5.2(a) and 5.2(b) as stated and addition of rule section 5.2(h), regarding electric powered vessels. Boats registered prior to Oct. 26, 2021, will be grandfathered. Motion seconded, carried unanimously.

Agenda Item 4f – Proposed water safety survey on the creation of large wake

Board and LPA management will work on a survey regarding general water safety items, to be distributed in the future.

Agenda Item 5a – 2022 LPA Budget – Capital and Operational Budgets

- 2022 LPA Capital Budget – the capital budget presented at the September meeting was reviewed. There were no additional comments or questions.

ii. 2022 LPA Operational Budget

Rutledge presented the proposed 2022 LPA operational budget. Budget includes 5% dues increase, increase to guest boat stickers and a small increase to camping fees. Marina lease reflects increase for covered slip and addition of available boat storage. Expense increases are reflected in the budget for Salaries, Road Surfacing, and Insurance. These expense increases are unavoidable with inflation and the current market and availability for these items. Note in previous years to 2021, the operating budget was projected to be at break even. This is no longer the case with the previous year changes for 1) increase in water revenue, which will cover the SRF Loan payment, SRF Loan was used to fund the water capital improvement project and 2) increase in the amount of, non-cash expense, depreciation which in the past was used as a base for capital improvement expenditures. The new shop and the water plant project reflect an increase in depreciation. The increase in depreciation will not reflect negatively on ending cash balance. The proposed 2022 operating budget is projecting a loss of \$221,575.

Board discussed the proposed operation budget, projected cash flow and year end projected cash balance. LPA Management will review the proposed budget and bring final proposal to the November 23, 2021, board meeting for approval.

Agenda Item 6 – Other Business

Agenda Item 7 – Closed Session – The board entered closed session at 7:47 p.m. to discuss legal matters. Board exited closed session at 8:15 p.m.

Adjourn - With no further business, the meeting was adjourned at 8:16 p.m. ■

LET US DO THE COOKING FOR YOU!



Great Tasting Fresh Fried Chicken - Cooked to perfection with a unique taste and style. A family recipe and process that's been successful for over 50 years.

Available at your Panora



601 E Main St. Panora • (641) 755-2213

Q&A:

JAN REINICKE

Friends of Lake Panorama president provides update.

BY SUSAN THOMPSON
Lake Panorama Times

Friends of Lake Panorama is a 501(c)3 non-profit charity dedicated to supporting recreational amenities at Lake Panorama. The first meeting of the Friends of Lake Panorama board of directors was Dec. 3, 2013. An application for nonprofit status was filed with the IRS in January 2014, and approved in July of that year.

The charity is governed by a volunteer, seven-member board of directors. In this month's Q&A, Jan Reinicke, Friends president, talks about current projects and future goals.

Q. Let's start with a look back at some of the major projects Friends of Lake Panorama has helped make possible in the last seven years.

A. With the help of the LPA community being central to our success, I believe it's an impressive list of projects completed in the very short time we've been in existence.

Our first major project was a destination playground at Sunset Beach. It was a partnership project, completed in 2016, with Friends raising \$80,000 and LPA contributing \$50,000. We built upon that success with our second large project being the sports courts at Boulder Beach providing fans of basketball, pickleball and tennis many hours of fun and exercise. It was also a partnership project with the LPA.

Our next project in 2017 was a transformation of the Panorama West golf course thanks to an estate gift of \$473,00 from James and Joyce McLuen. It allowed the addition of many improvements, but also challenged Friends to establish a protocol for handling future estate gifts. It was a generous gift by longtime lake residents deciding to support something they loved by including a bequest in their will. We're hoping it encourages others to think about the future impact they can have on recreational amenities at Lake Panorama.

Another major project completed this year was a \$70,000 fundraising campaign for new playground equipment at both Shady and Boulder Beaches. As always, the LPA provided in-kind contributions of assistance with installation, oversight and maintenance.

Q. Tell us about the progress on the Lake Panorama Dog Park.

A. The possibility of building a dog park at Lake Panorama had been discussed for many years, even before Friends of Lake Panorama existed. Because the idea had received strong support from a segment of the LPA membership, in 2019 the Friends board recruited

volunteers to serve on a dog park task force to study location, design, costs and rules.

That group shared their proposal with the Friends board in 2020, which endorsed the plan and sent it to the LPA board of directors for consideration. At its August meeting, the LPA board agreed Friends could raise funds for a dog park. A \$50,000 goal was set, and fundraising began in October 2020.

The members of the dog park task force took a high-profile role once the project was approved by the Friends and LPA boards. What resulted was a group of people who recruited other dog lovers to the cause and successfully organized a fundraising event last fall, raising \$6,225 with a dog walk, golf tournament, raffle, auction and reception.

This past summer, the same group raised more than \$3,700 with a garage sale of donated items. In October, the group hosted a dog walk that raised \$325. In November, committee members hosted a Furry Family Photos event, bringing in donations of \$1,266.

Private donations continued at a strong pace, and \$45,000 had been raised by this past summer. The fourth Friends Beach Ball was held July 30, with a profit of \$25,000. The Friends board committed \$5,000 of those profits to reach the \$50,000 goal for the dog park.

This has been a very successful fundraising model for Friends. In addition to the many fundraising events held, the networking among task force members and supporters in the community resulted in many donations coming in faster than for many of the other projects we've sponsored.

Most importantly, it demonstrates what a small group of committed people with some well-defined goals can accomplish to make their community a better place for them and their furry friends.

I'm happy to report much of the dog park construction is complete, with only the entrance gates and a small shelter over the entrance left to build. Grass was seeded this fall, and has emerged, but additional seeding will be needed in the spring. Two trees have been planted. The LPA will be installing a parking area and two picnic benches. Friends continues to accept donations for the dog park to purchase additional trees, and perhaps some benches, plus help with ongoing maintenance costs.

The park will be open to LPA members and their guests. Opening will take place sometime in 2022, and will depend on how soon the turfgrass is fully established.

Q. What other projects are in the works?

A. Friends will be completing two other projects in 2022, using funds from the 2021 Beach Ball. Enhancements to an existing trail near the Panorama West golf course are underway. The existing trail is used by the Panorama School District as a cross-country track site. A task force of volunteers has developed plans that include marking a portion of this trail and designating it as the "official" Panorama West Trail.

For safety reasons, and in compliance with current LPA rules, users of this 2.5-mile trail, which includes a 1.5 mile out-and-back section, and an optional 1-mile loop, may include hikers, runners, cross-country skiers and dogwalkers, but no motorized vehicles.

The newly marked trail will wind through grassy open areas and timber but will not cross the golf course or roadways. A trail map will be placed on an informational kiosk that will double as a trail head sign. The trail head, with limited parking, will be located at the end of the Nicholl Drive cul-de-sac just east of the Panorama West clubhouse.

Low profile 4x4 recycled plastic lumber posts with directional signage, recreational symbols, and distance markers, plus two recycled plastic benches, will be installed along the multi-use portion of the trail.

Another project made possible by the 2021 Beach Ball is the addition of three swings to the Sunset Beach playground. These will be installed in spring 2022.

Fundraising is underway for two new projects. One is a half-court basketball at Sunset Beach. The court will be on a concrete pad 40-feet wide by 50-feet deep. Sport Construction Midwest, headquartered in Adel, will install a new Goal-setter MVP hoop, place tile on the concrete, and paint half-court lines. A 10-foot-high fence and one gate will complete this project.

Mark and Karen Einck, who matched donations of \$25,000 for the Boulder Beach basketball court, have pledged to match up to \$20,000 for the Sunset Beach court. It is hoped \$40,000 can be raised for construction in 2022. Donors of \$500 or more will be recognized on a sign at the court.

The other new project involves developing a proposal for a multi-use recreational area on Lake Panorama's south shore. At its June 2021 meeting, the LPA board of directors unanimously approved a motion to allow Friends to develop this "recreational concept."

A volunteer task force is working on a proposal to take to the LPA board in the spring. The proposal

will include a disc golf course and a walking/hiking trail, with additional recreational amenities considered. The plan will need approval from the LPA board of directors before work begins, but Friends is accepting donations for this effort now.

One final project I want to mention. In the last two years, four high-quality metal benches have been placed in various locations at both Sunset and Boulder Beach. Locations at all three beaches have been identified for additional metal benches, either stationary or swinging. The current cost of one of these benches on a concrete slab is about \$3,200.

These benches can be purchased either as a memorial for a loved one, or by those who want to leave their mark on Lake Panorama while they are alive. The benches include signs that can be engraved with up to four lines of text.

We are not conducting a general fundraising campaign for benches. Instead, this "Benches at Beaches" project targets individuals, couples and families interested in sponsoring a bench. We hope to find sponsors for several benches before installation, which would mean a cost savings on concrete pours and reduced shipping costs.

So far this fall, Friends has received donations from two couples for two new swinging benches, one at Shady Beach and one at Boulder Beach, which will be installed in 2022. Anyone interested in discussing the sponsorship of a bench at one of Lake Panorama's three beaches can email staff@friendsoflakepanorama.org, or call Susan Thompson at 515-240-6536.

Q. What are the various ways people can donate to Friends?

A. First, I want to remind everyone that all donations are tax-deductible, and donors receive a confirmation letter for tax purposes. Statistics indicate a high percentage of charitable contribu-

tions are made in the last few weeks of the year so we're looking forward to additional contributions coming in to support the basketball half-court at Sunset Beach, the South Shore Recreational Concept, the dog park, and the Friends general fund.

There are several options to donate. One easy way is to clip the coupon from the Friends ad in this issue of the Lake Panorama Times, fill it out and mail it with a check to Friends of Lake Panorama, P.O. Box 488, Panora, IA 50216. Or simply include a note with your check so we know how you want your donation used, and mail to the same address.

On the Friends website — friendsoflakepanorama.org — there is a donation form that provides more details. This form can be printed, completed and mailed with a check. Donations also can be made by credit card on the Friends website.

Donations of securities (stocks, mutual funds, etc.) are welcome, as are direct IRA qualified charitable distributions — for donors older than age 70 ½ who are required to take forced IRA distributions. There are potential tax-saving benefits when considering either of these direct donation strategies. For information, contact Kristen Crouthamel, financial advisor at GCSB Investment Center, at 641-755-2799 or kristen@investgcsb.com.

Q. Any additional thoughts you'd like to share?

A. Friends of Lake Panorama is the perfect opportunity to forge a strong partnership with the Lake Panorama Association to improve the recreational opportunities here at the lake. Working together, we have the potential to improve the quality of life for current and future residents. While the LPA's focus, out of necessity, needs to be on safety, security and infrastructure needs, Friends of Lake Panorama can be a catalyst and support group focusing on the amenities



Jan Reinicke

our community members desire.

Our working relationship with the LPA is a good model as we move forward. The LPA board has provided financial contributions when possible and many in-kind contributions. LPA staff have spent many hours helping make each of the projects come to be a part of life at Lake Panorama.

We are proud of our commitment to engage LPA community members in establishing priorities and continuing our work to provide additional amenities. The volunteer committee working on developing a concept for recreational amenities on the South Shore is another good example of seeking input from community members with expertise and commitment.

We will be doing outreach for the support needed to complete the next phase of projects and hope you'll include Friends in your priorities. We'd like to widen our fundraising base in the community and get new first-time donors on board. We appreciate your support and look forward to working with you to build a strong Friends organization for the future.

That future support can include marking your calendars now for the fifth Beach Ball on July 22, 2022. This is our primary fundraising event in addition to the individual donations we solicit throughout the year. It's always a fun event so save the date and plan to attend. More information will be available in the spring. ■



need an easier way TO GET YOUR CAR WASHED?

**Featuring state-of-the-art
automatic carwash bays, and turbo
dryers in the self service bays.**

**Washing Options from \$7-\$10 and our
Customer Value Cards are always available**

Our automatic wash bays can accommodate
Dually & Long Bed extended cab pick ups!

EASY TO USE! CONVENIENT! AFFORDABLE!

ALL SEASONS CAR WASH

Check us out on Hwy 44 West, Panora! 601 W. MAIN, PANORA

ALWAYS OPEN 7 DAYS A WEEK 24 HOURS FOR YOUR CONVENIENCE!

Lake Panorama **TIMES**

Lake Panorama Times is a monthly newspaper published by Big Green Umbrella Media Inc., an Iowa corporation. Contents 2021 Big Green Umbrella Media, Inc. All rights reserved. Nothing may be reprinted in whole or in part without permission of the publisher. Editorial Policies: Contact the publisher for permission to reprint articles, cartoons or any other portions of the paper. Lake Panorama Times is not responsible for unsolicited manuscripts. All letters received become the property of the publisher. We reserve the right to print letters in condensed form and to edit them for libel.

EDITOR & PUBLISHER: Shane Goodman
VICE PRESIDENT: Jolene Goodman
ACCOUNT EXECUTIVE: Stormy Miller
DESIGN MANAGER: Celeste Tilton
GRAPHIC DESIGNER: Jayde Vogeler
DIGITAL: Beckham Miller

CONTRIBUTORS: Susan Thompson
Cheryl Temple
Trish Hart
Jolene Goodman
Brent Antisdell
Patrick Clemmons
BUSINESS OFFICE MGR:
DISTRIBUTION:



TO SUBSCRIBE:
Visit www.LakePanoramaTimes.com
and click on the "SUBSCRIBE" link.
Subscriptions are \$24 per year (12 issues).

OBITUARY

Submit FREE obituaries at www.lakepanoramatimes.com.

MARCIA JEAN HARRIS

Marcia Jean (Ruemper) Harris, 87, of Panora, passed away Wednesday, Nov. 3, 2021, surrounded by family and friends at the Guthrie County Hospital, Guthrie Center, Iowa.

Marcia was born on Sept. 8, 1934, in Des Moines to Raymond Samuel and Gladys (Brockway) Ruemper. She married William G. Harris of Elkhart, Iowa, on June 18, 1954.

Marcia enjoyed playing golf, bridge, traveling and watching all types of sports. She also enjoyed sharing a glass of beer or wine with good friends. Also known as the “Sassy Bear Lady,” she collected all types of bears from all over the world, many gifted from friends and family. Marcia was also a longtime Chicago Cubs fan who lived long enough to see them win the World Series in 2016, which she was grateful for.

Marcia was preceded in death by her husband of 54 years, Bill Harris, her mother Gladys and father Raymond Samuel Ruemper, sister Sharon West of Des Moines, and son-in-law Roger Sydnes of Ames.

She is survived by her son, Mark Harris of Elkhart; daughter, Kim Sydnes and her children, Sam and Andy, all of Ames, as well as very dear nephew and nieces.

A Celebration of Life was held Saturday, Nov. 13, 2021, at the Lake Panorama Conference Center. Memorials may be made to the First Presbyterian Church in Guthrie Center. ■



CLASSIFIED ADVERTISING

Submit FREE classifieds at www.lakepanoramatimes.com.

DISCLAIMER: This publication does not knowingly accept advertising that is deceptive, fraudulent, or which might otherwise violate the law or accepted standards of taste. However, this publication does not warrant or guarantee the accuracy of any advertisement, or the quality of the goods or services advertised. Readers are cautioned to thoroughly investigate all claims made in any advertisement and to use good judgment and reasonable care, particularly when dealing with persons unknown to you who ask for money in advance of delivery of the goods or services advertised.

HELP WANTED
LPA Water Treatment and Distribution System Operator: LPA is pleased to announce the addition of a new position on our team. We are seeking qualified applicants for an additional water treatment and distribution system operator, who will complement the efforts of our existing team members. Requirements for this position include a minimum Grade I (One) Water Treatment Certification. More information can be found by clicking here.

HELP WANTED
Lake Panorama National Resort is Looking for Hard working friendly people to join our Golf Operations team. Currently we would like to add to our Pro shop, Golf Services and Starter/Ranger Staff. If you are interested in a rewarding position with our Golf Operations team please call the golf shop at 641.755.2024 or email Rob Riggins at rriggins@lakepanorama.org

HELP WANTED
Lake Panorama National Resort is seeking both full and part-time line cooks, part-time and seasonal dishwashers, part-time restaurant and banquet servers, and a seasonal

laundry attendant. Banquet servers are needed who can work into fall and beyond. Willing to train, and offer competitive wages. Plus employees can take advantage of golf, meal discounts, and access to the fitness center and pool. Submit application online here <https://www.lakepanoramational.com/> employment. Or apply in person daily 9 a.m. to 5 p.m. at Lake Panorama National Resort, 5071 Clover Ridge Road.

WANT TO BUY
WANT TO BUY your manufactured or mobile home 1990 and newer CENTURY HOMES of OSKALOOSA 641-672-2344(MCN)

AUTOMOBILES
DONATE YOUR CAR, TRUCK TO HERITAGE FOR THE BLIND. Free 3 Day Vacation, Tax Deductible, Free Towing. All Paperwork Taken Care Of. Call 1-855-977-7030 (MCN)
DONATE YOUR CAR TO CHARITY. Receive maximum value of write off for your taxes. Running or not! All conditions accepted. Free pickup. Call for details. 855-752-6680 (MCN)
CASH FOR CARS! We buy all cars! Junk, high-end, totaled – it doesn't matter! Get free towing and same day cash! NEWER MODELS too! Call 1-855-548-5240 (MCN)

CABLE/INTERNET
Earthlink High Speed Internet. As Low As \$49.95/month (for the first 3 months.) Reliable High Speed Fiber Optic Technology. Stream Videos, Music and More! Call Earthlink Today 1-855-679-7096. (MCN)

DISH Network. \$64.99 for 190 Channels! Blazing Fast Internet, \$19.99/mo. (where available.) Switch & Get a FREE \$100 Visa Gift Card. FREE Voice Remote. FREE HD DVR. FREE Streaming on ALL Devices. Call today! 1-855-434-0020 (MCN)
DISH TV \$64.99 For 190

Channels + \$14.95 High Speed Internet. Free Installation, Smart HD DVR Included, Free Voice Remote. Some restrictions apply. Promo Expires 1/21/22. 1-844-316-8876. (MCN)

BEST SATELLITE TV with 2 Year Price Guarantee! \$59.99/mo with 190 channels and 3 months free premium movie channels! Free next day installation! Call 855-824-1258. (MCN)

DIRECTV for \$69.99/mo for 12 months with CHOICE Package. Watch your favorite live sports, news & entertainment anywhere. One year of HBO Max FREE. Directv is #1 in Customer Satisfaction (JD Power & Assoc.) Call for more details! (some restrictions apply) Call 1-866-296-1409.(MCN)

EDUCATION
COMPUTER & IT TRAINING PROGRAM! Train ONLINE to get the skills to become a Computer & Help Desk Professional now! Grants and Scholarships available for certain programs for qualified applicants. Call CTI for details! 1-844-843-2771 (MCN)
TRAIN ONLINE TO DO MEDICAL BILLING! Become a Medical Office Professional online at CTI! Get Trained, Certified & ready to work in months! Call 1-844-405-2328. The Mission, Program Information and Tuition is located at CareerTechnical.edu/consumer-information. (M-F 8am-6pm ET) (MCN)

FINANCIAL
STOP worrying! SilverBills eliminates the stress and hassle of bill payments. All household bills guaranteed to be paid on time, as long as appropriate funds are available. Computer not necessary. Call for a FREE trial or a custom quote today. SilverBills 1-866-918-0981(MCN)

HEALTH & MEDICAL
Portable Oxygen Concentrator May Be Covered by Medicare!

Reclaim independence and mobility with the compact design and long-lasting battery of Inogen One. Free information kit! Call 844-716-2411.(MCN)

50 Blue Pills for only \$99.00! Plus S&H. Discreet, Save \$500.00 Now! Call Today. 1-855-917-5790 (MCN)

Green Roads' Pain Relief Cream. Great for backaches, arthritis, muscle aches & more. Get pain relief exactly where you need it most. Use code: PAIN to get three FREE gifts! Visit <https://greencbdtoday.com/midwest> (MCN)

INCOME OPPORTUNITIES
Become a published author! Publications sold at all major secular & specialty Christian bookstores. CALL Christian Faith Publishing for your FREE author submission kit. 1-888-981-5761 (MCN)

MISCELLANEOUS
Eliminate gutter cleaning forever! LeafFilter, the most advanced debris-blocking gutter protection. Schedule a FREE LeafFilter estimate today. 15% off Entire Purchase. 10% Senior & Military Discounts. Call 1-855-577-1268. Promo Code 285. (MCN)

GENERAC Standby Generators provide backup power during utility power outages, so your home and family stay safe and comfortable. Prepare now. Free 7-year extended warranty (\$695 value!). Request a free quote today! Call for additional terms and conditions. 1-877-228-5789 (MCN)

Never Pay For Covered Home Repairs Again! Complete Care Home Warranty COVERS ALL MAJOR SYSTEMS AND APPLIANCES. 30 DAY RISK FREE. \$200.00 OFF + 2 FREE Months! 1-844-596-1237. Hours Mon-Thu, Sun : 9:30 am to 8:00 pm Fri : 9:30 am to 2:00 pm (all times Eastern). (MCN)

LONG DISTANCE MOVING: Call today for a FREE QUOTE from America's Most Trusted Interstate

Movers. Let us take the stress out of moving! Speak to a Relocation Specialist, call 877-327-0795. (MCN)

BATHROOM RENOVATIONS. EASY, ONE DAY updates! We specialize in safe bathing. Grab bars, no slip flooring & seated showers. Call for a free in-home consultation: 855-836-2250. (MCN)

Wesley Financial Group, LLC Timeshare Cancellation Experts. Over \$50,000,000 in timeshare debt and fees cancelled in 2019. Get free informational package and learn how to get rid of your timeshare! Free consultations. Over 450 positive reviews. Call 877-326-1608. (MCN)

The Generac PWRcell, a solar plus battery storage system. SAVE money, reduce your reliance on the grid, prepare for power outages and power your home. Full installation services available. \$0 Down Financing Option. Request a FREE, no obligation, quote today. Call 1-877-381-3059. (MCN)

NEED NEW FLOORING? Call Empire Today* to schedule a FREE in-home estimate on Carpeting & Flooring. Call Today! 844-785-0305 (MCN)

UPDATE YOUR HOME with Beautiful New Blinds & Shades. FREE in-home estimates make it convenient to shop from home. Professional installation. Top quality - Made in the USA. Call for free consultation: 866-970-3073. Ask about our specials! (MCN)

FREE AUTO INSURANCE QUOTES for uninsured and insured drivers. Let us show you how much you can save! Call 855-995-2382 (MCN)

Looking for assisted living, memory care, or independent living? A Place for Mom simplifies the process of finding senior living at no cost to your family. Call 1-877-580-3710 today! (MCN)

Need IRS Relief \$10K - \$125K+ Get Fresh Start or Forgiveness Call 1-877-258-1647 Monday through Friday 7AM-5PM PST (MCN)

REESE TREE CARE
Old Masters Neighborhood Services

WE TREAT FOR TREE HEALTH AND DISORDERS
Complete Groundskeeping & Property Management

LICENSED, INSURED AND REASONABLE

EXPERT, PROFESSIONAL SERVICES
Trees • Shrubs • Hedges
Lawns • Landscape

Over 40 years of education, art, safety, training and excellence in the green industry at your service.

BILL REESE - Owner
515-943-0544 • 641-755-2140
breesetrees77@gmail.com
ISA Certified Arborist
ISA Certified Utility Specialist
#MW3944AU

Happy Holidays to you!

Jason Parkin
NMLS#2048903
515-371-8880

clear IOWA MORTGAGE
Powered by City First Mortgage, Company NMLS #3117

Chip Hansen
NMLS# 393287
712-249-3538

Happy Holidays

FROM THE SUNSET REALTY TEAM

Sunset Realty

218 W. Main Street, Panora, IA 50216
Office: 641.755.2377 sunsetrealtyia.com

Angie Worth
Agent/Office Manager
712.249.4067

Dave Wagler
Broker
641.757.1204

Laura Kemble
Broker Associate
641.757.0287

This advertisement is not intended to solicit already listed properties. Licensed to sell real estate in Iowa.

BUSINESS

Submit business news at www.lakepanoramatimes.com
or email shane@dmcityview.com.

PRIDE UPDATE

EXITING 2021 WITH A LOT TO LOOK FORWARD TO

BY CURTIS THORNBERRY

President, Panora and Lake Panorama Area Economic Development - PRIDE



Curtis Thornberry

It would be easy to think back over 2021 and recount all the business opportunities that were made harder by the COVID-19 pandemic. For example, I had to attend countless meetings and a couple of statewide conferences over Zoom that would normally have been held in person. I worked through numerous projects that seemed straightforward, but were significantly delayed because of supply chain disruptions. I talked with owners and managers of local businesses who were experiencing challenges with hiring staff. Rather than focus on the negative, however, I want to stress how productive this year has been for economic development as Panora checks off some of the boxes on its list of goals.

Like many rural Iowa communities, Panora entered this year with a lot of uncertainty but is exiting the year with a lot to look forward to. Housing and commercial development have been key goals over the last couple of years for PRIDE and the City of Panora. When I talk with area businesses, one of the things I hear is how challenging it can be to find housing locally. Hiring new employees for the city can be also a challenge.

Several years ago, the City of Panora conducted a housing assessment that highlighted the related challenges the community has. Issues such as aging housing stock, lack of homes for sale and limited rentals have impacted employers' ability to hire from outside the area and limited the options that prospective residents had in looking to move to the community. One of the pluses included fiber broadband services to all properties in the community, a service that many relied on to work from home during the pandemic.

This past year, several things have happened to push housing forward in the community. First, the City of Panora partnered with the Region XII Council of Governments to plan for the construction of four new low- to moderate-income houses. The building sites were supplied by the City, and the grant applications were submitted for housing tax credits and development funds. This type of housing is essential for the school district looking to bring in new teachers, local government looking to hire police officers, or local businesses looking to expand their operations. Beginning in 2022, we should begin to see construction on these properties in Panora. Demand for lake property outside Panora continues to drive the local market, with Lake Panorama seeing 17 new houses in 2021, not including remodels of existing properties.

The City is also working with Panoramata Schools and Panora Telco through a public/private partnership to extend Clay Street west of N.W. 4th Street to Panther Drive and the elementary school complex. This project will bring a number of benefits to the community. The improved safety response times and reduced traffic congestion on the school campus will be noticeable. The project will also address stormwater

issues in the area and make up to 18 buildable lots available for new housing near the school.

The downtown commercial business district continues to thrive. I receive frequent requests for businesses looking to locate in Panora in the Downtown Historic Business District, but the requests can't be satisfied because of limited commercial inventory. Earlier this year, the Iowa Downtown Resource Center performed a Downtown Walk Around analysis for the City. In their report, they noted that "Good things are happening in [Panora]." They even remarked that many of the issues they see in communities of Panora's size have already been addressed locally, including downtown design standards, a vibrant town square, revolving loan fund resources and development incentives for business façade improvements. While there are several storefronts that are vacant, overall, there is a good mix of businesses with retail, restaurants/hospitality, and professional services available downtown.

Two properties on the east edge of downtown, including 106 E. Main St. and 113 E. Main St. are available for sale or will be soon. The Ben's Five and Dime is closing at the end of the year, and this will leave a 10,800-square-foot vacancy at 106 E. Main St. beginning January 2022. An additional 6,400-square-foot space is available on the east end of the Downtown Historic Business District as well and is on the market today.

In addition to business development through the main business corridor, other commercial projects have been occurring in the City. In the Panora Telco business park, two new businesses have moved into the building at 102 S.E. 13th St. Restyle Décor & Consigned Furniture and Reshape Fitness Studio renovated a Broker's International property. Guthrie County Hospital and Clinics is also building a new clinic at the entrance to the business park. The clinic will replace the existing location in the Panora Plaza and is slated to open the beginning of 2022.

If 2022 is anything like 2021, it will be important to stay focused and nimble when it comes to local development projects. With the increase in housing, there will be more opportunities to attract families to support local businesses and attract new ones to the area as well. Many of the goals set by the City over the past several years will become reality soon enough. It's also important to recognize that relationships and partnerships are key to the success of these projects. PRIDE is a local economic development organization that fosters collaboration in the business community and seeks ways to support and grow local businesses and the environment necessary for their success. ■

Twin Vines offers unique location for special events

The Twin Vines name reflects Brad and Ben Hayes being twins, with a nod to the grape vines they decided could stay.



One of the special events Twin Vines planned and sponsored this year was a five-course Farm-to-Table dinner featuring locally sourced cuisine. The appetizer course was served in the gazebo near the vineyard, with the other four courses at long tables near the barn.

BY SUSAN THOMPSON

Lake Panorama Times

Ask Brad and Ben Hayes why they were interested in purchasing the vineyard and buildings on Highway 44 one mile west of Panora, and they both look a little sheepish.

"In the beginning, we weren't interested in the vineyard and buildings at all," Brad says. "The attraction was the farm ground that came with the vineyard. We farm with our family, growing corn, beans and cattle, and saw this farm ground as the perfect opportunity to expand."

Brad and Ben are twins, the sons of Rick and Mary Hayes. Brother Matt is the oldest of four children. In between him and the twins is sister Michelle Meinecke, who lives with her husband Cory and their two sons in Yale. The four siblings grew up on Lake Panorama and graduated from Panoramata schools.

The twins purchased the farm ground in 2018. First, they wanted to learn about the acre-and-a-half of grape vines.

"We needed to figure out what we had there, and if we should keep it or tear it out," Ben says.

They got help from Iowa State University Extension personnel and other grape growers. Once they learned it takes five years or more for grape vines to produce fruit, they decided it would be a shame to tear it out.

They talked with their sister Michelle, who agreed to try her hand at making wine from the grapes.

"Some friends and I had used winemaking kits in the past, so I had some knowledge about the process," she says. "But it's different when you're harvesting and using your own fruit. The winemaking has turned into a family operation. It's fun to be part of the process from the beginning to the end."

The vineyard includes five different grape varieties. In 2019, the Hayes family harvested their grapes, donated some to a food bank, and used some to make their first batch of wine.

"We got about 50 bottles, which we mostly gave away as gifts," Michelle says. "In 2020, we sold some of our grapes, plus bought some grapes from other growers. That gave us enough to make more wine than the previous year."

They sold some of that 2020 wine at events held this year, but ran out in July. This fall they harvested a good crop from their own vineyard and purchased grapes from other Iowa vineyards. As in previous years, family members and friends helped with the grape harvest and wine-making.

If all goes as planned, both red and white wine will be bottled in January and February.

"This is the most wine we've made so far," Michelle says. "We hope we'll have more bottles available in 2022 to use during our special events and offer to those hosting events here."

By late 2020, Ben and Brad were ready to introduce the Twin Vines event center. On Nov. 1, a sign painting workshop offered in collaboration with Art on the Fly, based in Jefferson and owned by Jolene Peters, was held in the Twin Vines Venue.



Twin brothers Brad and Ben Hayes, and their sister Michelle Meinecke, are shown in the Twin Vines meeting venue. The brothers bought the property in 2018 and launched their meeting venue business in November 2020.

Sixteen people attended, and the event was deemed a success.

Twin Vines was chosen as the name for the wine the family was bottling, as well as the event center they were planning. The name reflects Brad and Ben being twins, with a nod to the grape vines they decided could stay. A logo that features the red barn was created and is used on wine bottle labels and promotional materials.

The brothers purchased tables and chairs for the second-floor venue and installed a bar on one side. Kandi Meinecke, owner of Britches and Bows, added decorative touches. With windows on three sides, the room offers panoramic views of the vineyard and the surrounding area.

The venue can handle about 50 people sitting at tables, or up to 200 if people are coming and going. Pricing is determined on a case-by-case basis, with rental either by the half-day or full-day. Besides the meeting room, the venue rental fee includes use of the grounds, the vineyard gazebo, and covered bridge. Since the large barn is used for winemaking, it's not open to the public.

A special hourly rate is offered for photographers who take graduation pictures or family photos, with several outdoor settings available for backdrops.

This year, Twin Vines sponsored a Dueling Fiddles live music event, with two women fiddlers performing from a deck on the upper level of the barn. A food truck provided several options, and craft beers were available. About 100 tickets were sold to guests who brought folding chairs and blankets to spread out near the vineyard for the performance.

On Oct. 2, Twin Vines hosted a five-course Farm-to-Table dinner featuring locally sourced cuisine. The appetizer course was served in the gazebo near the vineyard, with the other four courses at long tables near the barn. The sold-out event hosted 50 diners.

Reshape Fitness Studio in Panora has held several events at Twin Vines, including yoga sessions paired with either wine or cider. Reshape held a 3-mile Turkey Trot walk/run at Twin Vines on Thanksgiving morning both this year and last year.

Private events in the venue have

included birthday, retirement, reunion, graduation and holiday parties, plus baby and bridal showers. Several corporate events have been held, from training sessions to a real estate business open house to a Panora Chamber meeting.

The twins continue to look at what other venues are doing and plan to sponsor a few of their own events each year.

"We're always open to ideas for different types of events, and looking for opportunities," says Brad. "Our time is really the main limiting factor, since we all work full-time."

Michelle works at EMC Insurance in Des Moines.

"With the winemaking, we're learning as we go, but we're having fun with it," she says.

The twins both graduated from the University of Northern Iowa. Ben majored in construction management at UNI before attending Iowa State University to earn a master's in business. He is project manager for Formation Group in Johnston, a company that assists clients with building development and planning.

Brad majored in real estate and finance and has his own real estate appraisal business. His office is located within the Twin Vines building, so he's the main contact for those who have questions or want to schedule a tour. He can be reached at 641-757-9808 or by email at info@twinvinesvineyard.com.

Twin Vines has a Facebook page and a website. The website, at www.twinvinesvineyard.com, has a form that can be completed to get the rental process started. The venue is available for reservations 365 days of the year.

The twins of Twin Vines say they're pleased with their first year in the event venue business.

"We're meeting new people, and enjoying the unique things we've sponsored this year, like the Farm-to-Table dinner," says Brad.

Ben says he's happy with the success they've had so far.

"This opportunity is unique, but we're having fun with it," he says. "There aren't any other event venues in Guthrie County that offer such a unique setting. We're looking forward to having more people discover Twin Vines." ■

Two new members were appointed to the board for three-year terms.

years of her husband Jim's

At the meeting, two new members were appointed to the board for three-year terms. Bill Winkleblack replaced Tricia Steffen, who has been on the Friends board since the nonprofit began in December 2013. Jackie Wellik replaced Emily Spradling, who was ap-

For the past year, the charity has focused on



Larry Isom digs the hole for a tree on the west portion of the park, which is designated for large dogs. He earlier planted a sugar maple tree in the east portion of the park, which is designated for small dogs.

Construction is nearing completion. Turfgrass that was seeded late this fall was able to germinate, but overseeding will be needed in the spring. The park will open in 2022, once the turfgrass is established well enough to

Other topics discussed

Board members reviewed plans for a new project — a basketball half-court at Sunset Beach, for which fundraising is underway. Mark and Karen Einck, who

The Friends board formed a task force to develop a proposal for recreational amenities on Lake Panorama's South Shore. The task force is made up of both Friends board members and additional volunteers from the community. The proposal cre-

WINDY RIDGE

INTERIORS

Come Home to Your Dream

a trendy luxury!

- Consultations
- Staging for Home Sales
- Kitchen Design and Layout
- Decorating/Designing
- Event & Seasonal Decorating
- Custom Slip Covers
- Shopping

We make your home better!

Windy Ridge Interiors & More | Ph: 712-210-6833



FRIENDS

FROM PAGE 10



Larry Isom planted two sugar maple trees at the Lake Panorama dog park on Nov. 6. He and his wife Heather, who own Isom Tree Farms, donated the trees and installation. Each installed tree is valued at \$300.

ated by this task force will be presented to the LPA board in the spring. The proposal is expected to include a disc golf course and walking trail with additional amenities also being considered.

Preliminary plans for the next fundraising Beach Ball were discussed. The event will be held July 22, 2022. Final decisions on plans, pricing and how funds raised at this event will be used will be made at the board's spring meeting.

Currently, donors giving to Friends can designate their gift to the basketball half-court

at Sunset Beach, South Shore future recreational amenities, the Lake Panorama dog park, and the Friends general fund.

Donations can be made by check payable to Friends of Lake Panorama, and mailed to Friends of Lake Panorama, P.O. Box 488, Panora, IA 50216. Direct donations can be sent via Venmo @Friends-Panorama. Donations also can be made by credit card on the Friends website at friendsoflakepanorama.org.

Donations of securities (stocks, mutual funds, etc.) are welcome, as are direct IRA

qualified charitable distributions. For information, contact Kristen Crouthamel, financial advisor at GCSB Investment Center, 641-755-2799 or kristen@investgcsb.com.

Details on past and current projects are available on the Friends website. Friends of Lake Panorama also has a Facebook page. Those interested in keeping up to date about Friends activities are asked to "like" and "share" the Friends page. Questions or comments? Send an email to staff@friendsoflakepanorama.org. ■

ASK *Lake Panorama* TIMES

If you've got questions, we'll find the answers.

Q: I see that you run obituaries at times in the paper. How do I submit one, and what does it cost?

A: We believe that obituaries are important news to our readers and to the families of the loved ones who passed away. As such, we run obituaries of people who had a tie to the lake community in some way. There is no charge for this. You can ask the funeral service provider to send the obituary and photo to us, or you can send directly to shane@dmcityview.com. You can also submit online at www.lakepanoramatimes.com.

Q: I see a fox hanging around my property that doesn't look right. Might be sick or injured in some way. It leaves but keeps coming back. Who should I contact?

A: First and foremost, experts say to never approach a wild animal, especially one that may appear sick. They also state that simply seeing foxes out during the day is normal and doesn't mean they are sick. Seeing raccoons during the daytime often indicates they have distemper. These animals are usually sick and can be disposed of by LPA security, as necessary. Fox can also get distemper, but seeing them in the daytime is not a good judge of whether this is present.

Fox and coyote do not tend to overlap in territory. Fox are more tolerant of humans and development, while coyotes seek rural areas. We have both at Lake Panorama, but it is more likely to see foxes in town and at the lake, while coyotes stick to the undeveloped, rural areas.

A condition fox and coyote can suffer from is mange, which makes their coats look sparse and can be challenging on them if there is a cold winter.

If there is an urgent public safety concern, you should contact LPA security immediately at 641-757-9035 or the Iowa DNR game warden Jeremy King at 712-250-0061.

Q: Can registered sexual offenders live at Lake Panorama?

A: The short answer is no, according to the LPA Rules and Regulations. Section 7.04 addresses this, first defining "registrants" as "persons required to register with Iowa's state sex offender registry pursuant to Iowa Code Chapter 692." The regulation then states that "registrants shall not permanently or temporarily reside at the Lake Panorama Association." ■

Submit your questions at www.lakepanoramatimes.com or email shane@dmcityview.com.

Wishing you a
*Merry Christmas &
a Happy New Year!*

Proven to be Worth the Trip from Anywhere!

Your Dealer for Life.

Give Joel a call to see how you can get

FREE OIL CHANGES

for life!

Joel Hester
Sales and Leasing Professional
641-757-0238
j.hester@karlchevroletstuart.com

324 SW 8TH STREET // STUART
WWW.KARLCHEVROLETSTUART.COM
FIND NEW ROADS™

Wishing you

JOY

this holiday season!

FROM Lea and Wade Sundeen

Lea Sundeen
515-991-5470
Lrlfleming@iowarealty.com
Iowa Realty
Iowa's Largest

Sundeen Decorating
2-PICKY
Wade Sundeen
515-238-WADE (9233)
SUNDEEN DECORATING

Licensed to sell real estate in Iowa. This advertisement is not intended to solicit already listed properties.

WE UNDERSTAND.



DATA THEFT. PRIVACY ISSUES. POLITICAL AGENDAS
PURPOSEFUL MONOPOLIES. LACK OF OVERSIGHT.

Considering all the fishy problems with Big Tech, it is no surprise that central Iowa businesses are reinvesting marketing dollars back to independent, locally owned media that they trust.

We appreciate the opportunity, and we will gladly make room for you in our bowl.



TALENTED people. **OUTSTANDING** customer service.
INNOVATIVE products. **EXCEPTIONAL** delivery systems.

8101 Birchwood Court, Suite D, Johnston, Iowa 50131 • 515-953-4822 • www.biggreenumbrellamedia.com



INVESTING IN YOU

Year-End Financial Checklist Part 2

Can you contribute more to your retirement plans? In 2022, the contribution limit for a Roth or Traditional IRA is expected to remain at \$6,000 (\$7,000 for those making “catch-up” contributions). Your modified adjusted gross income (MAGI) may affect how much you can contribute to a Roth IRA. There are retirement savings vehicles that allow for greater contributions and tax deductions as well. Consider your employer’s retirement plan or if you are self-employed, give us a call to discuss a SEP IRA, Solo(k) or other solutions.

RMDs. In most circumstances, once you reach age 72, you must begin taking Required Minimum Distributions (RMDs) from most types of retirement accounts.

Small business owner? You may be able to write off expenses linked to the portion of your home used to conduct your business.

Open an HSA. A Health Savings Account (HSA) is a pre-tax savings account to be used solely for current and future medical expenses. There are several HSA rules and limitations to consider. You are limited to a \$3,650 contribution for 2022 if you are single; \$7,300 if you have a spouse or family. Those jump by a \$1,000 “catch-up” limit for each person in the household over age 55.

Consider the tax impact of any upcoming transactions. Are you preparing to sell any real estate this year? Are you starting a business? Might any commissions or bonuses come your way in 2022? Do you anticipate selling an investment that is held outside of a tax-deferred account? All are examples of things to consider as we head into the new year.

Visit investgcsb.com to read this article in its entirety. As always, contact our office to discuss your specific situation.



Kristen Crouthamel, AIF®, Financial Advisor

GUTHRIE CENTER: 413 State Street • Guthrie Center, IA 50115
PANORA: 505 East Main Street • Panora, IA 50216
EM: kristen@investgcsb.com • PH: 641.755.2799
MOBILE (VOICE): 641.757.2737 • MOBILE (TEXT): 641.450.1868

InvestGCSB.com



This content/article was prepared by MarketingPro. Securities offered through Registered Representatives of Cambridge Investment Research, Inc., a broker-dealer, member FINRA/SIPC. Advisory services offered through Cambridge Investment Research Advisors, Inc., a Registered Investment Adviser. Guthrie County State Bank and GCSB Investment Center are not affiliated with Cambridge. Non-deposit investment products are not FDIC insured, not bank guaranteed, and may lose value. GCSB Investment Center does not offer legal or tax advice. Please consult the appropriate professional regarding your individual circumstance.

Happy Holidays TO OUR VALUED LAKE PANORAMA CUSTOMERS!



WWW.WOODDUCKLANDSCAPES.COM



Wood Duck
LANDSCAPES
Creating Beautiful Outdoor Environments

515-661-3208

josh@woodducklandscapes.com



@WoodDuckLandscapes



Friends of Lake Panorama

A public nonprofit charity supporting recreational amenities at Lake Panorama

2021 was a great year filled with good news for Friends of Lake Panorama and the many donors who support the efforts of this non-profit charity!

PLAYGROUNDS COMPLETED

An effort to raise \$70,000 was launched in November 2019 to purchase new playground equipment for Boulder and Shady beaches. The goal was reached in late October 2020, and the Shady Beach playground was installed that fall. The Boulder Beach play equipment was installed in April 2021.



BEACH BALL FUNDS TWO NEW PROJECTS

Two new projects will be completed in spring 2022 using funds raised at the 2021 Beach Ball. One is improvements to an existing trail near the Panorama West golf course that is used as a cross-country track site. A portion of this trail will be designated as the “official” multi-use trail.

The 2.5-mile trail includes a 1.5 mile out-and-back section, and an optional 1-mile loop. The newly marked trail will wind through grassy open areas and timber. A trail map will be placed on an informational kiosk that will double as a trail head sign. Directional signage and one or two benches will be placed along the trail.



The second project made possible with Beach Ball funding is the addition of three swings to the Sunset Beach playground. These will be the same swings as those now at Boulder and Shady beaches, and will be placed west of the existing playground. There will be one toddler swing and two bench swings.

FUNDRAISING BEGINS FOR BASKETBALL COURT

Of the three sport courts at Boulder Beach, the basketball court gets the most use. It's believed a court on the west side of the lake also would be popular. Space for a basketball half-court has been identified at Sunset Beach. A concrete pad 40-feet wide by 50-feet deep would be covered by the same tile used at Boulder Beach. A new Goalsetter MVP hoop and fencing would be included.



Estimated cost for this project is \$40,000. Mark and Karen Einck, who matched donations of \$25,000 for the Boulder Beach basketball court, have pledged to match up to \$20,000 for the Sunset Beach court. It is hoped the \$40,000 goal can be reached in time for construction in spring 2022. Donors of \$500 or more will be recognized on a sign at the court.

BENCHES AT BEACHES

In 2021, three high-quality metal benches were added at Lake Panorama's beaches. Locations at all three beaches for these heavier metal benches, either stationary or swinging, have been identified. Each would be placed on a concrete pad. These benches can be purchased either as a memorial for a loved one, or by those who want to leave their mark on Lake Panorama while they are alive. Friends is not conducting a general fundraising campaign for benches. Instead, this project targets individuals, couples and families who want to sponsor a bench. Interested? Email staff@friendsoflakepanorama.org, or call Susan Thompson, 515-240-6536.



DOG PARK UNDERWAY

Fundraising for a dog park at Lake Panorama began in September 2020, with a goal of \$50,000 to build the park and provide needed amenities. By July of this year, the total stood at \$45,000. A successful Beach Ball raised \$25,000, and the Friends board voted to complete the dog park fundraising effort by directing \$5,000 there.

Construction is nearing completion. Grass has been seeded, and two dog water fountains purchased. Two sugar maples donated by Isom Tree Farms have been planted. Additional items will be completed over the winter. The park will open in spring/summer 2022, once the turfgrass is strong enough to handle expected traffic.



SOUTH SHORE RECREATIONAL CONCEPT

At its June 2021 meeting, the LPA board of directors unanimously approved a motion to allow Friends to develop a “recreational concept” for the south shore. The main focus is a disc golf course and a walking trail. These two projects are the most likely recreational use there, but additional amenities will be considered.

A recreational concept report is in the works, and Friends officials will return to the LPA board in spring 2022 to present it. Friends is accepting donations for a disc golf course and walking/hiking trail on the south shore. However, final approval of these projects by the LPA board will be required before construction could begin.



MARK YOUR CALENDARS! 2022 Beach Ball — FRIDAY, JULY 22

More information about all past, present and future projects is available at www.friendsoflakepanorama.org.

Please consider making a 2021 tax-deductible donation to support one of these great projects!

Donor Name/Names: _____

Mailing Address: _____

My gift is in Memory of or Honor of: _____

For Friends updates, please provide email: _____

Direct your charitable donation by marking one or more of the funds below. To split your donation, indicate percentages or dollar amounts for each fund chosen.

☐ Basketball Half-Court at Sunset Beach ☐ South Shore Future Recreational Amenities

☐ Lake Panorama Dog Park ☐ Friends General Fund

To donate by check, make it payable to Friends of Lake Panorama. Complete this coupon and mail it, along with your check, to Friends of Lake Panorama, PO Box 488, Panora, IA 50216.

Donations of securities (stocks, mutual funds, etc.) are welcome. For information, contact Kristen Crouthamel at 641-755-2799 or Kristen@investgcsb.com. Direct donations can be sent via Venmo @Friends-Panorama.

Donations also can be made by credit card online here: friendsoflakepanorama.org.

Questions or suggestions? Contact Susan Thompson, 515-240-6536, or staff@friendsoflakepanorama.org.

AREA CHURCH GUIDE

- BAGLEY**

 - Bagley United Methodist Church**
401 Main St., Bagley
www.umc.org
641-439-2458
- BAYARD**

 - Bayard United Methodist Church**
500 Third St., Bayard
www.umc.org
712-651-2307
 - St. Patrick Catholic Church**
124 Prairie St., Bayard
www.guthriecounty.catholicchurches.org
641-747-3843
- CASEY**

 - Saint John's Lutheran Church**
104 E. First St., Casey
www.idwlcms.org
641-746-2734
- United Methodist Church**
100 E. Second St., Casey
www.umc.org
641-746-2210
- GUTHRIE CENTER**

 - First Christian Church**
105 N. Fourth St., Guthrie Center
www.christianchurchgc.com
641-332-2571
 - First United Methodist Church**
405 Prairie St., Guthrie Center
www.gcumcia.org
641-332-2408
 - First Presbyterian Church**
701 State St., Guthrie Center
641-332-2425
 - Guthrie Center First Baptist Church**
113 N. Fifth St., Guthrie Center
www.guthriecenterbaptist.com
641-747-8198
- Guthrie Center Seventh Day Adventist Church**
1305 North St., Guthrie Center
www.guthriecentersda.com
641-322-2778

Immanuel Lutheran Church
713 N. 12th St., Guthrie Center
www.immanuelgc.org
641-332-2918

Kingdom Hall of Jehovah's Witnesses
1300 Grand St., Guthrie Center
www.jw.org
515-747-8524

Open Bible Church
606 Prairie St., Guthrie Center
515-747-3961
- Saint Mary Catholic Church**
603 Main St., Guthrie Center
www.guthriecounty.catholicchurches.org
641-747-3843

Seventh-Day Adventist Church
1305 North St., Guthrie Center
www.adventistdirectory.org
641-332-2761

United Methodist Church
405 Prairie St., Guthrie Center
www.umc.org
641-332-2408

Wesleyan Church
101 S. 7th St., Guthrie Center
641-747-3844
- Menlo**

 - Methodist Episcopal Church**
402 Sevnth St., Menlo
 - Primitive Church**
504 Third St., Menlo
- PANORA**

 - Calvary Chapel of the Raccoon River Valley**
604 E. Main St., Panora
https://calvaryraccoon.com
641-755-4268
 - Church of the Brethren**
2946 200th Road, Panora
641-755-3800
- Faith Bible Church**
2096 Highway 4, Panora
www.fbcpanora.com
641-755-3034
Christmas Eve Candlelight Service, 7-8 p.m.

First Christian Church
102 E. Church St., Panora
www.panorafcc.org
641-755-2227
Christmas Eve Worship, 5 p.m. and 7 p.m.

Fountain Of Life Church
2322 Wagon Road, Panora
www.FOLCPanora.com
641-755-2322

Lighthouse Assembly of God Church
400 S.E. Third St., Panora
www.panoralighthouseassemblyofgod.com
641-755-3060

Lutheran Church of Hope
5405 Chimra Road, Panora
515-222-1520

Panora Community Church
2322 Wagon Road, Panora
641-755-2322

Saint Thomas Lutheran Church
2100 N. Highway 4, Panora
641-755-2051
Christmas Eve Service, 7 p.m.

St. Cecilia Catholic Church
220 N. First St., Panora
www.guthriecounty.catholicchurches.org
641-747-3843
- United Methodist Church**
119 W. Main St., Panora
https://panoraumc.org
641-755-2655
Christmas Eve Candlelight Service and Chimes and Choir Play, 5:30-6 p.m.
- STUART**

 - All Saints Catholic Church**
216 All Saints Drive, Stuart
https://stuartallsaints.org
515-523-1943
 - Fairview Congregational Christian Church**
1706 Stuart Road, Stuart
515-523-1493
 - First Congregational Church**
224 N. Division St., Stuart
www.stuartfccbible.org
515-523-1570
 - Jefferson Center Chapel**
1298 130th St., Stuart
641-524-5358
 - New Beginnings Open Bible Church**
207 S.W. Seventh St., Stuart
http://stuartnbchurch.org
641-757-0192
 - Stuart Friends Church**
723 N. Fremont St., Stuart
515-523-1541
 - Stuart-Mount Vernon United Methodist Church**
219 N.W. Second St., Stuart
http://umcstuartia.org
515-523-1078

LAND AUCTION

214.29 ACRES M/L IN GUTHRIE COUNTY, IA & ADAIR COUNTY, IA

FRIDAY, DECEMBER 17TH, 2021 | 10:00AM

Dexter Community Center | 707 Dallas Street in Dexter, Iowa

Peoples Company is pleased to be representing Gebbie Heritage LLC in the sale of 214.29 acres of Adair and Guthrie County farmland. Four tracts of high quality farmland located southwest of Dexter, Iowa in Section 35 of Penn Twp, Guthrie County and Section 1 of Lincoln Twp, Adair County. Top producing soil types including Macksburg, Sharpsburg, and Judson clay loams with CSR2 soil ratings in the upper 80's.

TRACT 1: 53.75 acres m/l with 51.98 FSA cropland acres carrying a CSR2 soil rating of 88.2.
TRACT 2: 83.66 acres m/l with 77.53 FSA cropland acres carrying a CSR2 soil rating of 82.7.
TRACT 3: 72.49 acres m/l with 47.91 FSA cropland acres carrying a CSR2 soil rating of 71.1. Balance in pasture.
TRACT 4: Home and 4.39-Acre Acreage Site - 1,168 Sq. Ft., single-family, ranch style home, built in 1976, with 3 bedrooms, 1 bath with a detached 22' x 16' car garage. Locally known as 3495 Zebra Avenue, Dexter, Iowa 50070. Tract includes several outbuildings and grain bins.

LISTING #15905

MATT ADAMS
515.423.9235 | Matt@PeoplesCompany.com

THE BEST SELECTION OF HOME APPLIANCES IN WEST CENTRAL IOWA!

FINANCING AVAILABLE

Appliance **Delivery**
Appliance **Installation**

Appliance **Disposal**
Appliance **Service & Repair**

Showroom: 609 N. Carroll Street, Carroll
(712) 792-2863 • dreesco.com

WISHING YOU WARM, SAFE AND

Happy Holidays

from Bella Sorella!

Come see us at Bella Sorella and shop all things winter!

118 W. MAIN STREET, PANORA BellaSorella-Boutique.com Tuesday-Friday 10a-5p • Saturday 10a-4p

LET US *Wrap up* YOUR LENDING!

Stephanie Hummel
NMLS# 2034503
641-757-7899
shummel@gohomeside.com
www.homeloanfit.com

Key Mortgage Group
at Homeside

It shouldn't take your roof disappearing in a matter of seconds to find out who you can count on.

BUT SOMETIMES IT DOES.

And that's the Silver Lining®.

To find out more about the Silver Lining, contact

BRYTON INSURANCE AGENCY
128 W. Main St. • Panora, IA 50216
641-755-2123

WEST BEND
THE SILVER LINING®

Need Neu Blinds?

Before you buy, call James for a FREE estimate!

CALL FOR A FREE QUOTE!

WILL BEAT ANY COMPETITOR'S PRICE BY 10%!

Neu Blinds

CALL TODAY FOR YOUR FREE CONSULTATION 515-250-5543!

- ✓ **FREE ESTIMATES**
- ✓ Easy and Affordable
- ✓ Many styles & brands to choose from
- ✓ **FREE INSTALLATION**
- ✓ Referrals

Owned and operated by James Neu of Johnston

Every house deserves Neu Blinds.

TRISH HART’S NATURE PHOTO OF THE MONTH

Great Blue Herons at Lake Panorama



BY SUSAN THOMPSON
Lake Panorama Times

One of the largest birds seen at Lake Panorama is the Great Blue Heron. The one shown here is a frequent visitor to the small cove where Trish and Scott Hart live. Trish Hart is a photographer who offers custom prints of her nature photos on canvas, paper, metal and glass. Great Blue Herons typically are seen in Iowa along the edges of rivers, lakes and wetlands. These birds are tall with a long neck and a wide black stripe over their eye. They are grayish blue in color and have long feather plumes on their head, neck and back.

Most of the time, Great Blue Herons are either motionless or moving very slowly through the water looking for their prey. Common foods include fish, frogs, reptiles, small mammals and even other birds. Great Blue Herons build their nests, which are made of sticks, high in trees.

For more information about Trish Hart’s photography, visit NaturesCanvasPhotos on Facebook. ■

LAKE DOG AND COVE CAT

By CHERYL TEMPLE
Lake Panorama Times

LAKE DOG
Name: Gunner
Owners: Krissy and Don Ross

Gunner is a 21-month-old Aussie Shepherd Border Collie mix that lives on Burchfield Cove with Krissy and Don Ross and play-mate Hunny. Gunner enjoys going out on the boat. If you drive by his house, he will run back and forth yelling “hi” to you because he is a friendly boy.

COVE CAT
Name: GW (Short for George Washington)
Owners: Pam and Britt Shelton

GW thinks he is the President of the United States. The cat sits stoutly in high places and acts more like a guard dog. GW has a friend here at the lake, Mr. Fox, that he watches from the window. GW was found at 10 weeks old with a car fan belt mark on a leg. The cat used one of its nine lives while taking a ride to a park while under the car. GW is the Shelton’s third rescue cat. ■



Suggest Lake Panorama residents and their pets for us to cover on the **Lake Panorama - Lake Dogs and Cove Cats** Facebook page



THE LOCAL ANIMAL EXPERTS



- Pet wellness
- Diagnostics
- Surgery
- Large or small animals
- Emergencies

Panora P.E.T.S.
Helping the homeless cats of Guthrie County
www.panorapets.com



STUART-ANITA VETERINARY CLINIC, PC

www.StuartVetClinic.com • M-F 8AM-5PM, SAT 8AM-NOON
827 Front St., Stuart (515) 523-1755 • 300 N. Highway 148, Anita (712) 762-4193

MERRY CHRISTMAS & HAPPY HOLIDAYS

May The New Year Be Awesome

Dale Hochreiter & Makenna Woodvine



CYCLONE
Pest Management
Panora, IA

Dale Hochreiter: 641-757-0605
Makenna Woodvine

Locally owned and operated
Free estimates and no contracts
Licensed and Insured
All work is guaranteed
Products used are people and pet friendly

GIVE US A CALL, WE HANDLE THEM ALL!

COLD WEATHER IS COMING. DON'T LET YOUR FURNACE GIVE YOU THE COLD SHOULDER

“These guys are rock stars. We had an issue with our townhouse and another company had come out the previous week and could not find the problem. When the problem occurred again, we spoke to Doug’s guy over the phone and they came right over. The employee walked in and within 30 seconds knew exactly what needed to be done. He had his guys come that same day and do the repair all on a Saturday!”

Christian H.



TEMPSTAR
RUUD

HEATING • COOLING • PLUMBING

DOUG’S PLUMBING AND HEATING INC.

Number 1 in the Number 2 business!

2164 Highway 25, Guthrie Center • (641) 332-2198

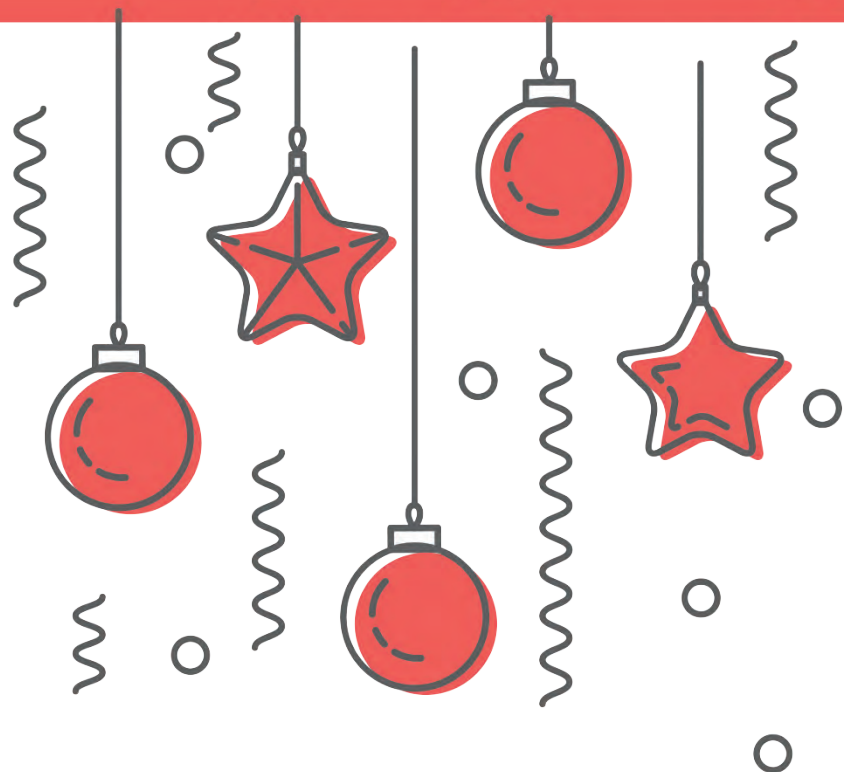
90th ANNIVERSARY

GUTHRIE COUNTY
STATE BANK

MEMBER FDIC

19312021

Connecting Communities
FOR 90 YEARS



MERRY CHRISTMAS FROM YOUR FRIENDS AT GCSB!

LOCAL SUPPORT OF OUR SMALL BUSINESSES HELPS OUR COMMUNITY THRIVE.
During 2021, your patronage has made a big difference in Guthrie County!

 LESLIE ANDERSON	 PAIGE ANDERSON	 DONNA BAKER	 DALE BEHREND	 KATE BROWN	 CHRIS CARLSON	 MARK CATES
 KELLY MLEYNEK	 BRANDON MONAGHAN	 SHANNON NEFF-MUELL	 JAMIE PATRICK	 MATT PEAREY	 SONYA PIERCE	 ASHLEY RIGGEN
 GAYLE SHACKELFORD	 COURTNEY SHEEDER	 TIFFANY STEENSEN	 LAURA STETZEL	 ERICA TUNINK	 MIKE UNDERWOOD	 BARB WOLLNER



WISHING YOU A JOYFUL
& PROSPEROUS 2022!



KRISTEN CROUTHAMEL, AIF®
FINANCIAL ADVISOR
EM: kristen@investgcsb.com



VICKI GUBSER
CLIENT SERVICES COORDINATOR
EM: vicki@investgcsb.com

PH: 641.755.2799
MOBILE (VOICE): 641.757.2737
MOBILE (TEXT): 641.450.1868
Offices in Guthrie Center at 413 State Street
and Panora at 505 East Main Street

investGCSB.com

NOTE OUR HOLIDAY HOURS:

- FRI., DEC. 24: Closed
- SAT., DEC. 25: Closed
- SUN., DEC. 26: Closed
- FRI., DEC. 31: Closing at 3:00 p.m.
- SAT., JAN. 1: Closed
- SUN., JAN. 2: Closed

Our locations in Guthrie Center and Panora
are here to serve you.

Visit **GCSBank.com**
for more information.



Securities offered through Registered Representatives of Cambridge Investment Research, Inc., a broker-dealer, member FINRA/SIPC. Advisory services offered through Cambridge Investment Research Advisors, Inc., a Registered Investment Adviser. Guthrie County State Bank and GCSB Investment Center are not affiliated with Cambridge. Non-deposit investment products are not FDIC insured, not bank guaranteed, and may lose value.