

PRSRT STD
U.S. Postage
PAID
Guthrie Center Times
Panora, Iowa
50216
Permit #2
OR CURRENT RESIDENT



OCTOBER 2017 | VOLUME 49 | NUMBER 10

DONOR SIGN AND BENCHES FINISH OFF SUNSET BEACH PLAYGROUND



Members of the Friends of Lake Panorama board of directors are shown with the Sunset Beach playground donor recognition sign (from left) Tricia Steffen, Emily Spradling, Dave Furbush, Bob McCleary, Jan Reinicke and Jody Muench. Not pictured is board member Kim Lubeck.

By **SUSAN THOMPSON**
Lake Times staff

Some final touches to the Sunset Beach playground now are in place. Three coated metal benches were installed earlier this summer around the perimeter of the playground, and a donor recognition sign was erected in early September. The playground opened in July 2016.

Donations totaling \$80,000 given to the Friends of Lake Panorama 501(c)3 nonprofit charity made up the base support for the new playground. The Lake Panorama Association provided an additional \$50,000. The LPA also provided technical and construction assistance.

While donations of all sizes helped make the playground possible, only donors of \$500 or more are recognized on the sign. The sign also features a graph-



One of the new benches was donated by neighbors of Sunset Beach in memory of Ray Russell. Russell, who lived near the beach for 10 years, passed away in December 2016.

ic of Lake Panorama, with key area names on the map. A red "You Are Here" arrow marks the Sunset Beach location. This same

graphic will be used on future donor signs as new projects are completed.

One of the new benches was

donated by Sunset Beach neighbors as a memorial to Ray Russell, who passed away in December 2016. For 10 years, Ray and his wife Barb lived a few houses away from Sunset Beach, before moving to Arizona. The Russells often joined with other neighbors to help maintain the landscaping at Sunset Beach.

Ray was well known throughout the neighborhood for sharing the bounty from his large garden. He fished from his boat or Sunset Beach almost daily throughout the season, and the couple hosted a fish fry each fall, which featured crappie, walleye and catfish, plus fried okra and hush puppies.

The other two metal benches were purchased from funds donated earlier to the playground project. Earlier donations also covered the cost to refurbish a wooden

PLAYGROUND, PAGE 6A

Panora Fire Department to again present Tower of Terror

By **ASHLEY SCHABLE**
Lake Times staff

Panora fireman Steve Pote says nightmares will be the least of people's worries when the Panora Fire Department presents its third annual Tower of Terror this month.

The department's fire training tower behind the fire department at 607 East Market Street in Panora is once again being transformed

into a Haunted House. It's been redesigned for new thrills this year with areas of stairs and crawling.

"It's going to be awesome," said Pote, who along with his fellow volunteer firemen and members of their families, has been working at the tower most evenings.

Careful not to give anything away to those planning to brave the Tower of Terror, Pote said it was time to make some changes

to the event this year.

"You can only go so long with the same thing and then you have to start changing it and this year it's completely redone," he said. "The thought process around how to scare people has changed, it's pretty cool and it will be a lot of fun."

Pote said this year's event will challenge people's senses.

"That's a good way to put it,"

he said.

The first year of the fundraiser for the fire department drew about 300 people for three nights of fun. They added another weekend for five nights of fun last year, and Pote said right at 1,000 guests entered the tower in 2016.

"We never thought it would get this big," Pote said. "That's pretty

TERROR, PAGE 6A

Rain pushes back concrete pour for sports courts

By **SUSAN THOMPSON**
Lake Times staff

Frequent rains in September and early October have forced a delay in the sports courts concrete pour at Boulder Beach. The resulting wet conditions delayed other projects on the concrete vendor's schedule, so it wasn't possible to get to Lake Panorama by mid-October, as originally planned.

Now the hope is weather will cooperate, and the vendor can get to the sports courts project by the end of October or early November.

Members of the Lake Panorama Association maintenance crew worked for several days over the last few weeks on ground preparation for the courts. Sod was removed, measurements taken, drainage issues addressed, and fill material brought in to raise the location and allow for proper drainage

In the process, a decision was made to "flip" the original design of the single tennis court and two pickleball courts. These three courts form a "T" with the pickleball courts originally planned to be on the west side, with the tennis court on the east.

An existing drainage line that runs diagonally from the road ditch along Panorama Drive to the lake didn't allow enough room for the larger tennis court to be on the west. The solution was to place the pickleball courts nearest Panorama Drive, with the tennis court to the west.

Now the ground preparation is mostly complete, although the recent rains will require some touch-up work in advance of the concrete pour. Once the concrete is done, the courts will be surfaced with a combination of blue and green sport court Power-Game surface tiles, and fencing installed.

COURTS, PAGE 2A

Task force begins work on McLuen estate gift

By **SUSAN THOMPSON**
Lake Times staff

The process is underway to determine how the Jim and Joyce McLuen estate gift of \$473,000 will be used. Twenty percent of their estate was given to Friends of Lake Panorama for the "upkeep, beautification or expansion" of the Panorama West golf course.

On September 27, three Iowa State University turfgrass specialists toured the course, led by Brandon Waddle, Panorama West course superintendent. The three members of the ISU Department of Horticulture were Nick Christians, University Professor; Adam Thoms, assistant professor; and Isaac Mertz, a graduate research assistant working on a doctorate with an emphasis on turfgrass science.

All three said they were impressed with the quality of the putting greens on the golf course. "Considering the weather this past summer, and in comparison with the greens we've seen at similar courses, you should be very happy with the putting surface," said Thoms in a follow-up letter. "The course superintendent should be recognized for the quality of the putting greens."

Christians has been on the Iowa State horticulture faculty since 1979. He's involved in both teaching and research with an emphasis on turfgrass science, and was Waddle's academic advisor at Iowa State in the 1990s.

"The McLuens must have loved this golf course," Christians said. "In my 39 years of doing this, I've never come across any golf course that has received this kind of gift."

GIFT, PAGE 6A



MASSAGE THERAPY NOW AVAILABLE AT:
Allen Family Chiropractic, PC
Dr. Andrew W. Allen • Cindy Denniston, LMT
108 N. 3rd St., Guthrie Center • Call 641-747-8247 Today

Join our Monthly Massage Club to save 10%-15%
Providing Health Solutions Through Chiropractic Care



The location for the new sports courts at Boulder Beach is just west of Panorama Drive and south of the road leading into the beach area.



The LPA maintenance staff used a transit to determine how much fill material was needed in various locations. Key components of the prep work were making sure the ground is level, and will drain properly.

COURTS

FROM PAGE 1

The courts will include one regulation tennis court with white lines. Two regulation pickleball courts will be adjacent, also with white lines. These three courts will be inside the same fenced enclosure. A separate fence will surround a basketball court that is slightly smaller than regu-

lation size. It will feature two half courts with Goalsetter MVP basketball systems and white lines. There will be some space between the two fenced court areas, with plans to install at least two benches between the courts. The \$150,000 project is being financed by \$75,000 in private donations raised by Friends of Lake Panorama, plus a \$75,000 match from the Lake Panorama Association.

LPA staff is managing the project in consultation with Friends of Lake Panorama. The location is south of the road leading into Boulder Beach, and east of the restrooms. Friends of Lake Panorama continues to solicit donations for the sports courts project, which will be used to help pay for additional expenses such as benches and signage. While donations of all sizes are welcome, only donors of



Members of the Lake Panorama Association maintenance crew are shown preparing the ground for the new sports courts.

\$500 or more are recognized on the Friends website. A sign listing these larger donors will be installed next spring near the courts. Donations can be made in someone's memory or in honor of someone. Checks can be mailed to PO Box 488, Panora, Iowa, 50216. Donations also can be accepted electronically on

the website at www.friendsoflakepanorama.org. Donations of securities (stocks, mutual funds, etc.) are welcome, and will be sold once transferred, with the proceeds deposited into the Friends bank account. A securities account has been established with GCSB Investment Center in Panora. Friends of Lake Panorama is

a 501(c)3 nonprofit charity that is separate from the Lake Panorama Association, and has a goal of improving recreational amenities at Lake Panorama. All contributions are tax deductible, and donors receive a receipt for tax preparation purposes. Email questions or comments to staff@friendsoflakepanorama.org.

We know what it took to build this business.

And we know what it takes to protect it.

To find out how West Bend can help protect your specialized business, contact this Official Supplier of the Silver Lining®.




BRYTON INSURANCE AGENCY

Chris Arganbright
128 W. Main St. • Panora, IA 50216
www.brytoninsurance.com
(641) 755-2123



WEST BEND
THE SILVER LINING®

WE




PORK PRODUCERS

Like Jason Fett of Guthrie Center

October is National Pork Month!



pork Be inspired



Guthrie County REC
A Touchstone Energy® Cooperative

1406 State Street, Guthrie Center
641-747-2206 • 888-747-2206
www.guthrie-rec.coop



PEOPLES
Trust & Savings Bank
people first banking™



100th
ANNIVERSARY

1917 - 2017

Get Started Online!

www.PTSB.bank

800-891-9389



Member
FDIC

**15 MONTH SPECIAL
CERTIFICATE OF DEPOS**



1.65%^{APY*}

15 MONTH CD

*Deposit must be NEW MONEY to PTSB. \$10,000 minimum balance to open and obtain APY. The Annual Percentage Yield (APY) is accurate as of 8/9/2017. We may impose a penalty for early withdrawal on time certificates. Fees may reduce earnings. No Brokered CD's, Public Funds or Institutional Deposits. Contact PTSB banker for applicable fees and full terms of account.

We appreciate your business!

Q&A: Royce Shaffer, IT Manager

BEHIND-THE-SCENES EMPLOYMENT KEEPS TECHNOLOGY RUNNING SMOOTHLY

By SUSAN THOMPSON
Lake Times staff

In today's world, successful businesses must have people who can manage ever-changing technology. At the Lake Panorama Association and Lake Panorama National, that person is Royce Shaffer. Here he answers questions about ways technology helps these two entities keep up with members and guests.

Q. Tell us about your educational background and family.

A. I grew up in Exira and graduated from Audubon High School. After high school, I attended Wilkes University in Wilkes-Barre, Pennsylvania. I completed a year-and-a-half at Wilkes before transferring to Buena Vista University in Storm Lake. I graduated from Buena Vista with a Bachelor of Arts degree in Finance and Banking, with concentrations in Management and Computer Science. I live with my wife, Lisa, and four-year-old son, Landry, in Grimes. Lisa is an interventionist in the Dallas-Center Grimes School District. Landry started preschool this fall and enjoys all the activities of a typical four-year-old. He keeps Lisa and me busy.

Q. You started at the LPN, and in later years took on responsibilities for the LPA, is that right?

A. I started working at Lake Panorama National Resort during the summer of 2002. During that summer, I setup and worked banquets, as well as worked the front desk. After the completion of my class work in 2003, I started to intern at the resort. Most of my duties included back office tasks, while also working the front desk a couple days a week. In March 2004, I began managing the pro shop, which I did until leaving to be the general manager at Majestic Hills Golf Course in Denison in March 2006. I returned to LPN in November 2007 doing back office tasks. Since then information technology and some basic marketing tasks have been added to my duties.

I'm a joint employee of both the LPN and LPA. I am in charge of the information technology and have

accounting duties for both organizations. In addition, I have some basic marketing responsibilities for LPN, which include social media posts, a weekly e-newsletter, and the LPN website.

Q. How has technology changed the business of both LPA and LPN in the years you've been here?

A. I can recall the days at LPN where we used cash registers and paper tee sheets. The manual entry required to run the business was time consuming. The software we use today is more integrated, which decreases the amount of manual entry, and adds efficiency and accuracy.

The LPA also has increased its efficiency in recent years. First by installing a fully integrated property management and accounting software called Jenark. This software handles member account management, dues and assessment billing, reporting and accounting.

In 2015, a document management software was installed. This software gives LPA the ability to index all paper and electronic documents and then search for these documents by index field. It is also easy to search documents by a keyword. The software then will display all documents with that keyword in them. Not only does this software save a great deal of time when looking for a specific document, but it also gives us peace of mind that all important association documents are stored electronically offsite in case disaster strikes the LPA office.

Q. Explain how the Point of Sales (POS) system works to tie together the various pieces of the LPN operation – the Links, the pro shops at both the LPN and Panorama West, the conference center, Spikes, and snack carts at the LPN.

A. Lake Panorama National uses Jonas Club Software, which is a fully integrated club management solution. This system allows us to integrate accounting, food and beverage point of sale, banquet and catering, pro shop point of sale and inventory, and tee time management. This integration decreases the amount of manual entry and increases accuracy.

Due to some limitations in the Jonas hotel module, we use a third-party reservation software to manage the Lake Panorama National Inn & Suites. This software is just used to take reservations and send confirmation letters. All payment information is handled through a Jonas POS, which feeds into the accounting module. Also, this year we began to use Square POS on our LPN bar carts. This allows us to securely accept credit cards on the golf course, and gives staff the ability to create tabs.

Q. What safeguards are in place to protect members and guests, plus the LPA and LPN?

A. Both LPA and LPN work with reliable vendors that take protecting our data seriously. All data on our network is backed up daily both locally and offsite. This gives us the ability to restore in the event of data loss.

Q. What responsibilities do you have for the LPA and LPN websites?

A. Randy Holl initially created the www.lakepanorama.org website with a company that specializes in homeowner's association websites. Brad Halterman now is responsible for the LPA site, and I have backup responsibilities.

I am responsible for the design and content of the www.lakepanoramanation-al.com website. I also volunteered to get the Friends



of Lake Panorama website (www.friendsoflakepanorama.org) established, and continue to help with periodic updates as needed. This site has the ability to accept donations electronically, which has been a nice benefit to the nonprofit charity.

Q. You're responsible for the LPN Weekly e-newsletter — how can people subscribe if they don't already get it?

A. The LPN Weekly was started in 2012. This is a weekly e-newsletter sent every Sunday morning to about 750 subscribers. The goal is to inform subscribers about events at the resort. We usually highlight the events happening in the next two-to-four weeks. Sometimes we look back and give a recap of an event that just happened. Anyone interested in signing up can go to www.lakepanoramanation-al.com and scroll down to the blue footer. Complete the "Stay Informed" form with your first name, last name and email. That's it!

Q. To wrap up, tell us what you like about working for the LPA and LPN.

A. I enjoy working for what are essentially two small businesses. This gives me the opportunity to personally know the full-time staff, plus learn about topics I would not have the opportunity to learn at a larger business. The tasks required each day can vary greatly, and that makes for interesting days.

FEATURE

'I've been doing it all my life'

LeRoy Oxley leading a productive and interesting life in Panora

By GORDON CASTILE
Lake Times staff

After being born and raised in Des Moines and living there most of his life, retirement in a small community has been good to LeRoy Oxley of Panora. "We (he and wife Nancy) like small-town Iowa," he said. "We love it here." And he's leading a productive and interesting life.

For example, Oxley has headed a major Iowa sports event. He's a volunteer at Timber Creek Therapies. Christmas time finds him as Santa at the town's annual celebration.

A retired telephone company executive, he serves on the board of directors of Panora Communications. He's involved in rating Iowa golf courses.

Plus he's part of a local group that some call the "Panora Mafia," he walks two to three miles per day rain or shine and is a familiar figure at many Panorama high school athletic events.

Oxley tells people he's celebrating the 41st anniversary of his 39th birthday. Incidentally, most days he shoots that figure (80) on the golf course. (Oxley reported he is a nine or ten handicap golfer.)

Golf is a big part of his life. "I play a lot of golf," he said.

Lake Panorama National Golf course has been the scene of a number of Iowa Open Golf tournaments. Until recently, Oxley headed the event for five years. This involved supervising some 200 volunteers and putting on a three-day tourney with 144 professional and amateur golfers competing. Players not only came from Iowa, but across the nation and Canada, he said.

Oxley and wife Nancy moved to Panora in 2001 after retiring to Arkansas for 10 years. They lived in a small community there and desired to do likewise in Iowa. They knew

couples who lived at Lake Panora and checked out the community. "I liked the golf course," said Oxley. The couple has resided in Panora the last 16 years.

In Arkansas he began rating golf courses. This is a complicated system where teams of men and women determine the difficulty of courses and the handicap per hole. He approached the Iowa Golf Association in 2001 and asked if they had a rating team. "You're just the person we're looking for," he was told and suddenly he had a job. Oxley formed teams and has rated up to 30 courses in a year.

What about Panora National? He's rated it twice. "Lake Panora National is probably one of the most difficult public courses in Iowa," he noted, pointing out the big private courses are more difficult.

Oxley attended North High School in Des Moines where he was a good athlete. "I like high school sports," he said, relating he attends nearly all Panora home and away basketball and football games, some baseball games and a few track meets.

He's especially a familiar fixture at home basketball games. "Kevin Wood and I have positioned ourselves on the front row where we have our share of conversations with referees."

Wife Nancy points out he's always trying to help people. He believes this stems from growing up the oldest of eight children "without hardly anything ... We lived in pretty dire straits ... I thought if I had the chance I'd help as many people as possible."

OXLEY, PAGE 6A



LeRoy Oxley

JOEL HESTER, SALES & LEASING PROFESSIONAL

KARL CHEVROLET **TRUCK MONTH**

★ STUART, IOWA ★

20% OFF ALL MODELS

2017 CHEVY CRUZE 2017 CHEVY MALIBU 2017 CHEVY TRAX

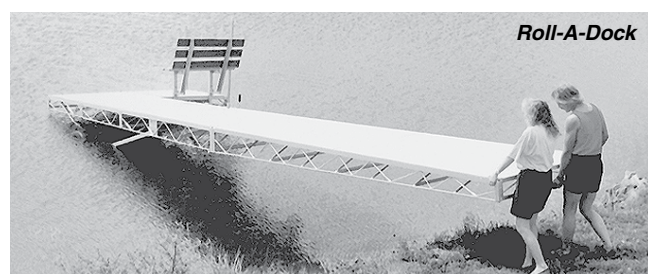
641.757.0238 // J.HESTER@KARLCHEVROLETSTUART.COM
324 SW 8TH ST. // STUART, IA 50205 // KARLCHEVROLETSTUART.COM

With approved credit. All rebates to dealer. Plus tax, title, license and dealer fees extra. Vehicle may have demo miles. Must qualify for all offers. Some exclusions may apply. Offer ends 10/31/2017.

Docks – Strong & Easy To Install

Roll-A-Dock
The Original Roll-A-Dock

Sectional, Floating & Custom
Exceptionally Strong Docks



Aluminum or Steel • Accessories • 15 Year Warranty

HEWITT

www.hewitt-roll-a-dock.com
QUALITY SINCE 1971

AUTHORIZED DEALER:



Diamondhead Sales

515-523-1000
SCOTT RUBIN, OWNER
diamondheadsales.com

We Build Homes For Life!

• New Construction • Remodels • Complete Plan Service

37 Years of experience working at Lake Panorama

*Give me a call today
for all your spring and summer
construction projects!*

Quality, Honesty & Integrity

Rick Hayes Construction



For ideas & inspiration, contact Rick at 641-757-0137 (cell)
or email at hayescon@netins.net

MORE THAN A DAYCARE

Little Panther Daycare & Preschool hires new director, nears 15 years in the Panora community

By **ASHLEY SCHABLE**
Lake Times staff

The doors of the building open to a sea of smiling faces. Kids settle in and play games or read books in a corner with their favorite toy and closest friends. A group of young girls begs their counselor to watch them jump near a slide on the playground outside. Another counselor sits quietly blowing bubbles to the amazement of shy, yet curious little eyes.

It's an ordinary day at Little Panther Daycare & Preschool in Panora.

The nonprofit center serves families living in Guthrie County and surrounding areas that seek a nurturing, stable, and quality environment for their children. Conveniently located just a few steps east of Panorama Elementary School and just north of the high school, Little Panther Daycare & Preschool provides care for children ages 4 weeks to 12 years, from 6 a.m. to 6 p.m. Monday through Friday. It also provides a Preschool Program for children ages 3 to 5 years old.

The privately owned, nonprofit corporation is fully licensed and regulated by the Iowa Department of Human Services. It will celebrate 15 years here in 2018.

Charles and Tracy Griffith, son Ian (4) and daughter Lylah (3) find Little Panther Daycare & Preschool a good fit for their family, who recently moved to the Panora area.

"The regular routine found at Little Panther, opportunities to socialize and structure of a center made us all feel at home," said Tracy Griffith. "The proximity to the (Panorama) elementary school is a huge benefit, and Little Panther is there to support us through upcoming stages in our children's lives."

Griffith said choosing a child care provider is a great responsibility for any parent and having a day care center that incorporates preschool curriculum ensures the children's continuing education in addition to receiving great care.

"Being able to leave our children with people we trust is more valuable than we can put into words," Griffith said. "The staff truly cares about our children's development and well-being and we are so thankful for them."

Griffith said the crafts and activities their children participate in are wonderful. Age-appropriate



ASHLEY SCHABLE | LAKE TIMES

Little Panther Daycare and Preschool staff are committed to providing a sensory rich environment, where children feel safe and secure while they learn. Children (from left) Reed Leo, Luca Stiefel, Maleah Cates, Kennedy Knorr enjoy bubbles in their room during a morning activity.

and developmentally appropriate curriculum is designed for each group.

"We look forward to discussing the day's activities with them and reviewing the papers they bring home," Griffith said.

Lylah Griffith enjoys naming all her day care friends, and when Ian began writing his name, it was a big milestone they all celebrated.

Sean and Casey Crees of Panora have four children at Little Panther, including Morgan (9), Ashley (7), Mason (4) and Natalie (2).

"Little Panther works for us because the staff is so easy to work with," Casey Crees said. "You can tell they really care about the kids and always have their best interests at heart. I love that they are nonprofit which keeps my costs low."

Little Panther offers full-time and part-time tuition rates that are affordable and accommodate a variety of schedules. They participate in the Child and Adult Care Food Program, providing four well-balanced meals every day as part of that tuition.

Little Panther is a great asset to the community, said Casey Crees.

"When we first moved here and didn't know anyone it was a huge relief to have a day care center in town," she said. "Their location right by the school is nice, too, so the kids can walk to school."

Chris Arganbright, owner of Bryton Insurance Agency in Panora and one of seven volunteer members on the Little Panther Daycare & Preschool Board of Directors, said the center is unique. "We started this nonprofit child

care center from the ground up because my co-worker could not find quality child care for her children," Arganbright said. The USDA zero-interest loan they received put them over the hump of being able to move the original building from Jamaica to Panora and then add on to it.

"For a nonprofit in the state of Iowa to be in business for 15 years is quite the accomplishment," Arganbright said.

Arganbright, who serves as president, is joined on the board of directors by Andy Randol, vice president; Julie Zajicek, treasurer; Kris Brewster, secretary; Laura Kemble, and Sarah Stiefel.

The board hired just their fourth director this August as Page Arganbright replaces Shellie Stogdill, who after 11 years in the position is relocating to St. Louis with her husband, Doug,



Page Arganbright, new director at Little Panther Daycare & Preschool helps Reed Leo put his shoe back on. Arganbright began her new role on August 21 and says she looks forward to getting to know the families and build relationships with those they care for.

for a job.

"I have just really enjoyed it," Stogdill said, trying to hold back her tears inside the center. "It's always been a family-type atmosphere here. It's not a huge center, a nice size, so everyone can know everyone."

Little Panther Daycare & Preschool is licensed for 56 kids total, and they always have a waiting list. They have five classrooms, including infant, 0-1 year, 1-2, 3-4 and school age children. They have structured programs that are age-appropriate, yet challenging for each group. They offer flexible learning philosophy to give each child the chance to develop their individual style.

Stogdill said each of their staff members, several who have been at the center from five to 10 years, have an age group they enjoy working with.

DAYCARE, PAGE 5A



Raylan Stiefel and Adelyn Brewster play a game together during a center time at Little Panther Daycare and Preschool in Panora.

Your property should reflect your high standards.

Our reputation speaks for itself.

We've been providing quality landscaping, beaches and rocking at Lake Panorama for over 30 years.



Rock Walls • Beaches • Shorelines
Crawler-loaders ~ Trackhoes ~ Loaders ~ Trucks

Dean A. Stanley, owner
Panora • 641-757-0205

STANLEY EXCAVATION

DAYCARE

FROM PAGE 4A

“I like the 3- to 5-year-olds,” Stogdill said.

Page Arganbright said she enjoys the 2- and 3-year-olds, who build with blocks, but still want to sit on your lap. She says she’s always ready to get out of the infant room.

“I’ll find myself thinking, ‘Didn’t you just eat?’” jokes Arganbright, who raised five kids — two sons and three daughters — with husband, Tom, on their farm south of Panorama.

Audra Johnson, who has been with the center for 11 years, teaches the preschool kids.

“There is something different here every day,” Johnson said. “The 4-year-olds, they can be sassy, but at least they are independent.”

Stogdill said that unlike a lot of day care centers where staff revolves in and out, Little Panther has been fortunate to be very consistent over the years.

“A lot of us have been here five to 11 years, which is a long time for a day care,” Stogdill said. She said it allows parents and staff to develop friendships.

She expects the program to continue to grow and have an impact on the families for whom it provides care.

“I feel like we’ve done a good job, we don’t have to advertise very much, we’re the only center in town,” she said. “I really feel like people are happy with us.”



Mya Albers and Lylah Griffith play with bright colored pom-poms at Little Panther Daycare & Preschool in Panorama.



Audra Johnson instructs preschool students during classtime. Little Panther Daycare & Preschool offers a preschool program for ages 3 to 5 years. This is included with the tuition.



Page Arganbright, new director at Little Panther Daycare & Preschool helps Reed Leo put his shoe back on. Arganbright began her new role on August 21 and says she looks forward to getting to know the families and build relationships with those they care for.



Stella Albers and Ellie Winters enjoy some time on the floor in the infant room at Little Panther Daycare and Preschool.



Tyler Astley, Lane Winters, Jaeyln Cates, and Guinevere Wetzel enjoy an outdoor play area at Little Panther Daycare & Preschool. The center provides care for children ages 4 weeks to 12 years. The are licensed for 56 kids total and always have a waiting list.



Page Arganbright (left) has been hired as the new director at Little Panther Daycare & Preschool in Panorama, taking over for Shellie Stogdill who has spent the last 11 years in the position. Stogdill is relocating to St. Louis.



AJ Spencer-Meyers and Addi Wagner share stories in books at Little Panther Daycare and Preschool in Panorama. Age-appropriate and developmentally appropriate curriculum is designed for each group at the center.



Know what’s below.
Call before you dig.

It’s the law and NOT
calling could cost you
money or your life!

Call 811 or
800-292-8989
www.iowaonecall.com


PANORA TELCO
641-755-2424
www.panoratelco.com


Lake
Panorama
641-755-2301
www.lakepanorama.org

LAKE PANORAMA
BARGE SERVICE

641-755-3351 515-971-0226
OFFICE DANNY’S CELL

lpbargo@att.net



Offering



ShoreStation®
BOAT HOISTS

Make Us Your First Call!





Keep Your Vehicle Looking Its Best!
ALL SEASONS CAR WASH
EASY TO USE! CONVENIENT! AFFORDABLE!
Check us out on Hwy 44 West, Panora!

Remember our Value Cards are always available at our change dispensing machine.
Always Open 7 days a week 24 Hours for your convenience.

601 W. MAIN,
PANORA



RYUUD

CREATE WARM MEMORIES
WITH A NEW HEATING SYSTEM.

RELY ON RYUUD™

GET ENERGY STAR®
PRODUCTS
and save on utility bills!



SAVE
MONEY
with high-efficiency
Ryuud HVAC systems.



RYUUD HEATING SYSTEMS

- ✓ RELIABLE HEATING
- ✓ QUALITY-BUILT
- ✓ HIGH-EFFICIENCY



2164 Hwy 25 • Guthrie Center
(641) 332-2198

DOUG'S PLUMBING & HEATING

In keeping with its policy of continuous progress and product improvement, Rheem reserves the right to make changes without notice.



Lake Panorama Realty Presents:
Select Lake Panorama Association Lots For Sale

IF YOU'VE BEEN WONDERING WHAT THESE SIGNS WERE...



These special signs are placed throughout Lake Panorama on lots that are owned by the Lake Association and have been selected for sale. For a complete list of these lots, please contact Lake Panorama Realty for more information.
All currently listed lots can be found on www.lakepanoramarealty.com

If you are interested in a Lake Panorama Association Lot and do not see it on the list, please call for more information.

Lake Panorama Realty
505 E. Main Street Panora | 641-755-3276 | www.lakepanoramarealty.com
Licensed to Sell Real Estate in Iowa



WOOD BROS. LANDSCAPING

Since 1986

SERVICES OFFERED:
Landscape Design and Installation;
Spraying; Fertilizing; Trimming;
Mulching; Tree Removal; Clean-Up; Windbreaks;
Stone/Block Retaining Walls; Steps; Pathways; Patios; Water Features

410 E. Clay St.
Panora, IA 50216

Nursery/Tree Farm located at
1740 Utopia Ave., Panora

Call Us Today to Schedule an Appointment:

Martin Wood
641-755-2572
641-757-0960 (Cell)

Kevin Wood
641-439-6682
641-431-0606 (Cell)

woodbros@netins.net

Daniel Neal of Jefferson is at Iowa studying marketing and management.



“I’ve enjoyed being able to learn new things in my business classes that I can apply to my future career, and in elective classes that are just super interesting.”

“I’m confident that having a Big Ten university degree will give me a good start. Iowa is giving me a lot of resources to solve solutions in the real world.”

“I recommend keeping an eye on what’s going on around town. Iowa City is electric. There’s always something cool going on.”

for IOWA

 THE UNIVERSITY OF IOWA

foriowa.uiowa.edu

LEAVE THE HARD WORK TO US!

- **WATER & SEWER**
- **TRENCHING**
- **BACKHOE SERVICE**
- **BASEMENTS**
- **TRUCKING**
- **SNOW REMOVAL**

Harmann Excavating



Matt Harmann, owner
Bus. 641-755-3640 • Cell 641-757-0907
Fax 641-755-3645
PO Box 307
Panora, Iowa 50216



Dave Wagler
Broker/Realtor

Laura Kemble
Associate Broker/Realtor

Nancy Smith
Office Manager

Lynda Geopfert
Office Assistant

THE TIME IS NOW
to list your lake home!

Lake Panorama Realty is your local trusted resource for selling lots & homes at Lake Panorama

Our team is here in Panora and ready to go to work for you. Call now for a free market analysis of your property.

Office: 641-755-3276 • 800-301-5253
Email: info@LakePanoramaRealty.com
505 East Main Street
Panora, Iowa 50216

LAKEPANORAMAREALTY.COM

 **Follow us on Facebook!**



Licensed to sell Real Estate in Iowa.

GUTHRIE COUNTY HISTORICAL VILLAGE IS “HIDDEN GEM”

By **SUSAN THOMPSON**
Lake Times staff

The year 2018 will mark two 50th anniversaries in the Panora area. Not only will the Lake Panorama Association be celebrating 50 years, so will the Guthrie County Historical Village.

The Village core is located on a four-acre site on the southwest side of Panora. It got its start when the Panora Depot was abandoned by the Milwaukee Railroad and donated to the Panora Lions Club. Through a community effort, the depot was moved to its current location in 1968.

Kristine Jorgensen is the museum's curator. She grew up in Panora, then attended Iowa State University and the University of Arizona before working in Seattle for several years. She took the job as curator when she returned to Iowa in 2002.

The complex includes 12 buildings filled with items of historical significance. Most were donated by people in Guthrie County and surrounding communities.

Jorgensen is always on the lookout for more. “Sometimes I get a call to come to a person's house and look around for things we could use,” she says. “Other times people bring in items they think might be of interest.”

“A lot of people living in Guthrie County have never been here, or don't know much about it. But we get lots of visitors from other Iowa counties, and across the country,” Jorgensen says. “Many of our out-of-state visitors come while they are staying at the Clover Ridge timeshares at Lake Panorama. We get some great reviews on our Facebook page from people who say they are blown away by what we have here.”

“I go to a lot of museums, and it's easy to see why people like what we offer,” she adds. “It's quiet, shady, no crowds and no lines. Visitors can take their time, and there is so much to see. People tell us the buildings and exhibits bring back



The Guthrie County Historical Village is open seasonally from May 1 to October 15. Located on the southwest edge of Panora, it includes 12 buildings and thousands of items of historical significance.

a lot of fond memories.”

The Village is owned by Guthrie County, and supported by an annual budget approved by the Guthrie County Board of Supervisors. That budget covers Jorgensen's salary, utilities and basic maintenance.

Since county funds can't be used for additional projects or renovations of existing buildings and exhibits, private fundraising is vital to the Village's growth. The Guthrie County Historical Village Foundation is a 501 (c)3 nonprofit organization that solicits donations to fund restoration projects at the Village.

Alex Krueger has served on the foundation board for about 25 years, and been president many of those years. “The Village is truly a hidden gem of Guthrie County,” he says.

Other foundation board members are Steve Kroeger, Curtis Thornberry, Dale Grotjohn and Nancy Smith. Jorgensen says the foundation is always looking for donations of both cash and items of historical interest, and those who may be interested in planning a bequest through a will or trust. More volunteers also are needed.



Fundraising made it possible to acquire this structure in 2014, and install a new roof and front porch this year. Additional funds are needed to finish renovations of the exterior and interior. When complete, the home will reflect life in Panora in 1900.

Jorgensen writes grant applications for financial assistance, most of which require matching funds. “The generosity of our donors makes it possible for us to continue our preservation efforts, protect our collections and offer special programs,” she says.

Recently, donated funds have made it possible to make headway on two large projects, but

more is needed.

In 2012, the owners of a Pullman Café and Observation Car offered it to the Historical Village. It had been sitting along Highway 44 in Panora for several years. They were willing to donate the car to the Village, if the expense of moving it could be raised.

Challenge accepted, and in 2013 the car was moved to

railroad tracks on the east side of the depot. A 1956 Caboose, added to the Village in 1989, sits on the depot's west side.

It took more than \$30,000 to prepare the site, move the car, and put on a new roof. This September, another \$8,000 was spent to have the exterior sandblasted, and rusted holes replaced with new welds. The exterior was painted a dark olive, known as Pullman Green since it was first developed in 1900 at the request of a Pullman Cars executive tired of the dark brown used previously.

Attention now will turn to the interior, which is estimated to cost \$50,000 for a full restoration. These cars included an outside deck on one end, near an indoor observation room with casual seating. Further back were dining tables and chairs, and a kitchenette.

The other current project is restoration of the Marchant House. The house was last owned by Mildred Marchant, and purchased by the Foundation in 2014 for \$25,000. It sits on land just west of the Village complex.

This past summer, fundraising and a grant from the Guthrie County Community Foundation made it possible to get a new roof and porch on the house. Additional exterior work is needed, plus all of the interior. Jorgensen said the plan is to restore and furnish the home to show what life was like in Panora in 1900. It's estimated another \$75,000 is needed to complete this project.

What's ahead for the second 50 years of the Guthrie County Historical Village? In 2015, the Foundation purchased the hayfield just east of the Village complex for \$30,000. In the next 10 years, the board would like to develop that area. Plans being discussed are a welcome center that would include a library, office and meeting room; a 1900 farmstead complete with farmhouse, barn, outbuildings and gardens; and a place where Civil War reenactments could be held.

VILLAGE, PAGE 2B

TOURING THE VILLAGE

There are lots of things to see and do at the Guthrie County Historical Village and Museum. Here's a rundown.

MAIN BUILDING: Various displays of life around 1900, such as a dentist's office, telephone switchboard, military items and uniforms dating from the Civil War, a 1912 Model T, Native American artifacts and much more.

LOG HOUSE: The log house, built in 1851, was the first permanent structure in the area that is now known as Panora. It was originally used as a residence and carried a supply of groceries.

Depot, Caboose, Pullman Car: The Panora Depot was the first building in the Village, which was moved to its current location in 1968. The caboose was added in 1989, and the Pullman Car in 2013. The Pullman is being renovated and not yet open to tours.

CHURCH: The New Bethel Methodist Church, built in 1913, was originally located north of Adair and features eight original stained-glass windows, a pump organ from St. Cecilia's Catholic Church, and wooden pews from the Church of the Brethren.

COUNTRY SCHOOLHOUSE AND outhouse: Cass #7, which sat northeast of Panora, was one of Iowa's later standardized schoolhouses with its signature “bank of windows.” The outhouse was originally located at Orange Township #5 schoolhouse.

IMPLEMENT BUILDING: This building contains antique farm equipment, horse-drawn plows, tractors, a threshing machine and binder, and many other items found on early working farms. Also on display are antique cars, covered wagons and a tribute to Guthrie County coal miners.

BLACKSMITH SHOP: This working display includes all the tools that would have been used in a blacksmith shop, such as a forge, anvil, bellows and tongs.

GENERAL STORE: This building was moved from Monteith in 1998. It's filled with many items, including patent medicines, sewing machines, the original Safeside Post Office, and a checkerboard ready for a game by the stove.

PRINT SHOP: This building was originally a lumberyard office near the railroad tracks in Bayard. Moved to the Village in 2002, it was the perfect size to house printing equipment that was already a part of the Village's collection.

LAW OFFICE: Built in 1878, the Batschelet Law Office is full of original documents, leather-bound law books dating from the 1870s, furnishings and the original walk-in safe.



Mobile Blasting Services from Carroll was onsite in late September to sandblast the exterior of the Pullman Car. After repairs, the car was painted Pullman Green.



This recent photo shows the renovated exterior of the Pullman Café and Observation Car; the Panora Depot, which was moved to this location in 1968; and a caboose that was added in 1989. Both the Pullman and the caboose received a new coat of paint in 2017.

NOVEMBER AT THE LINKS

TUESDAY'S

BUILD YOUR OWN BURGER!



\$6.99 PLUS TAX

BURGER & FRIES

CHEESE, BACON OR WHATEVER... BUILD IT THE WAY YOU WANT IT!

WEDNESDAY'S

GUY'S NIGHT OUT!



HAPPY HOUR 5 TO 7 PM

COMPLIMENTARY SNACKS

\$.50 WINGS

\$20 BOTTOMLESS DOMESTIC DRAWS

THURSDAY'S

LADIES NIGHT OUT!



HAPPY HOUR 5 TO 7 PM

COMPLIMENTARY SNACKS

\$1 OFF WINE

\$3 WELLS

\$1 OFF FLAT BREAD PIZZA'S

SATURDAY'S:

MOVIE NIGHT

Bring the kids out for dinner and a movie!

November 4th: Trolls

November 25th: Minions

Movies starts at 6:00 pm

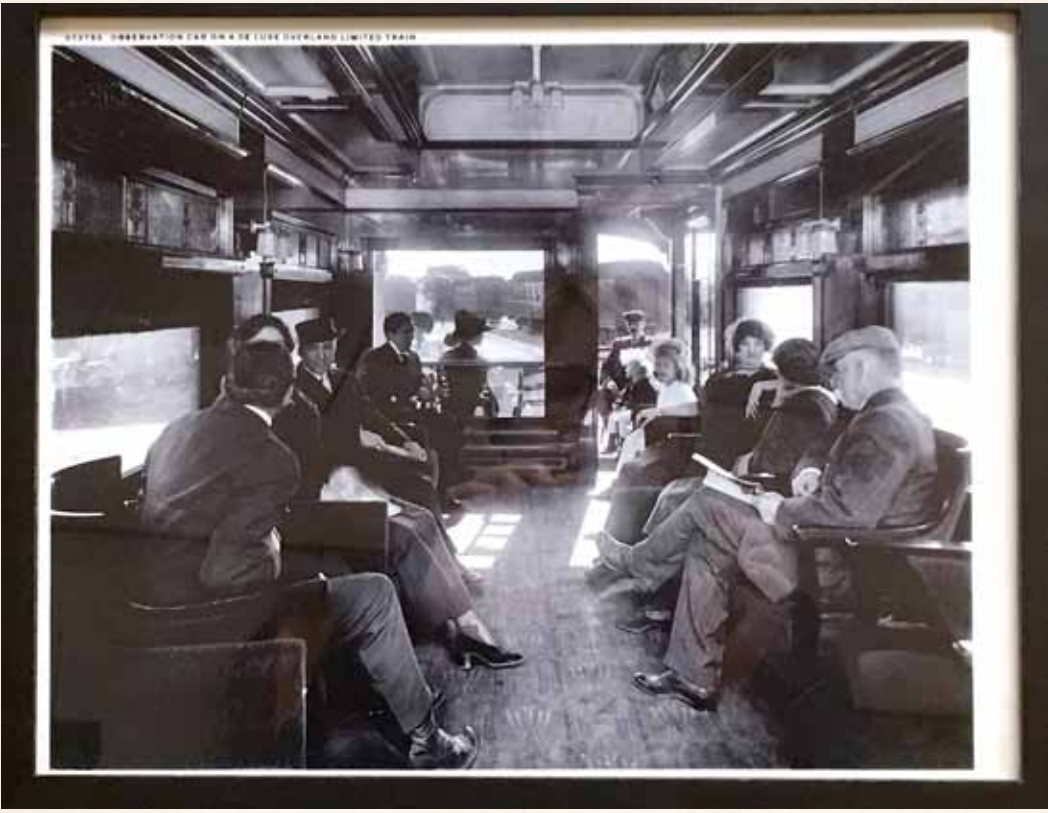
\$10 per child

includes movie, dinner, drink and adult supervision.

Chef Drew will be offering dinner specials to Moms and Dads while the movie is being played.

EVERYDAY THE LINKS WILL BE OFFERING DAILY LUNCH SPECIALS!

lakepanoramanational.com



This photo of the interior of a Pullman Café and Observation Car is on display in the Village's main building. It shows the outside observation deck in the front and casual seating inside. Not shown in this photo is the opposite side of the car, which would have been a dining area and kitchenette.

VILLAGE
FROM PAGE 1B

Those interested in making or discussing a donation can contact Jorgensen at gchv@netins.net or 641-755-2989. More information is available online at www.Facebook.com/TheGCHV or www.panora.org/museum.

The facility closed for the 2017 season following the October 15 Haunted Village, sponsored annually by the Panora Chamber and the Village. The event gives children the chance to dress in Halloween costumes and includes games, face tattoos, treats, storytelling, a hayride and more. While no admission was charged, freewill donations will be used to

help restore the Pullman Car. The Village is open seasonally May 1 through October 15. Hours are 10 a.m. to 4:30 p.m. Tuesdays through Fridays, with Saturdays and holidays 1 p.m. to 4:30 p.m. It is closed Sundays and Mondays. Admission for touring the Village is \$2 for adults, \$1 for children ages 6-17, and children 5 and under free. A season pass is \$10.



Alex Krueger, president of the Guthrie County Historical Village Foundation, and Kristine Jorgensen, Village curator, stand on the outside deck of the Pullman Café and Observation Car.



SUSAN THOMPSON | LAKE TIMES

Kristine Jorgensen, Guthrie County Historical Village curator, and Alex Krueger, president of the Guthrie County Historical Village Foundation, show off the newest addition to the Village. This "Little Free Library" was donated in memory of Betty J. Lippincott, has been installed near the schoolhouse, and is filled with books for children to borrow.

VILLAGE FEATURES TWO
"LITTLE FREE LIBRARIES"

By SUSAN THOMPSON
Lake Times staff

The latest addition to the Guthrie County Historical Village is a Little Free Library, donated in memory of Betty J. Lippincott, who passed away in August 2017. Lora Koch, who lives at Lake Panorama with her husband and two daughters, is Lippincott's daughter. "Reading was one of Mom's greatest pleasures throughout her life, and likely led to her profession as a teacher," Koch says. "Growing up, our home was filled with books, and reading was always encouraged. My older sister and I are both avid readers, and Mom encouraged this in her grandchildren through birthday and Christmas gift cards to Barnes & Noble."

Little Free Library is a 501(c)(3) nonprofit organization designed to inspire a love of reading and fosters neighborhood book exchanges. In 2009, Todd Bol built the first Little Free Library book exchange and placed it in his Hudson, Wisconsin, front yard



This "Little Free Library" was installed in 2016, donated by Sandy Rhoten. There are more than 60,000 of these free lending libraries located in all 50 states and 80 countries.

to honor his mother. The handmade book exchanges operate under the motto "Take a book. Return a book." The number of registered book exchanges has grown to more than 60,000 around the world, in all 50 states and in

80 countries. "When Mom was in hospice, I had several conversations with my friend, Kristine Jorgensen, about a memorial donation. At some point, I told her we had

LIBRARIES, PAGE 6B

QUICK DRAW



YOUR LIBERTY DEALER



- We Deliver & Install
- Large Inventory
- Will open anytime
- Call for appointment

MIKE MASSEY
712-830-7644

Manning, IA
quickdguns3@gmail.com
www.facebook.com/Quickd2

GRUBER

CONCRETE CONSTRUCTION

(formerly Ritter Concrete)

QUALITY WORK AT REASONABLE RATES!

Flat Work – Skidsteer Work
Replacement Work

Call Tom Today
515-210-4515

Insured

Serving Lake Panorama & surrounding communities

Design • Installation • Construction

"More than a shovel and a truck."
We have the equipment to do the job right!

- Retaining walls • Walkways • Patios
- Seeding • Sodding • Grading
- Plant materials • Planting • Pruning
- Landscape Material • Affordable Quality
- Insured

"Don't pay too much for too little"

GREENSPIRE LANDSCAPING

Over 25 years of dependable service

Phone Dan 641-439-2482
or 641-757-1497.
Please leave a message.

Come Visit Our New Showroom

We have a beautiful selection of quality

- Hardwood • Laminate • Ceramic • Vinyl • Carpeting
- Granite & Quartz Countertops

***Select carpets on sale now**

Lake Side Floors

FINANCING AVAILABLE Call Us Today at **641-755-3400**

We offer professional installation. We do not subcontract our work out therefore we can assure you that the job is done right.

We guarantee all of our work.

FREE QUOTES!

Call Us Today at 641-755-3400
or stop in and see us at
409 E. Market in Panora



COMMUNITY

10 Squared Women of Guthrie County awards money to New Opportunities

Lake Times staff

The 10 Squared Women of Guthrie County group held their quarterly meeting at the Lake Panorama Conference Center on Thursday night at 6:00 p.m. A light Mexican themed dinner was served.

10 Squared Women of Guthrie County was founded in February 2017 by three local area women, Shannon-Neff Muell, Kristen Crouthamel and Laura Smith, after being “challenged” by the local men’s group with the same goals.

The group’s goal is to bring together a group of 100 women who want to make a difference in the lives of the residents of Guthrie County. Each active member of the group can nominate one organization at a time. On a quarterly basis, of the nominations turned in (about 20 at this time), three groups or organizations are drawn at random to present their cause at the quarterly meeting. When the presentations are complete, the members in attendance vote, votes are tallied and the winner in announced immediately. Then the women start writing their checks. Each member writes a check for \$100, with a goal of donating at least \$10,000 per quarter to a deserving cause. Some members’ employers offer a matching gift program, so the past donations have been more than \$10,000. The group expects to award over \$10,500 to New Opportunities next week once all the donations are collected.

Presenting at the meeting were New Opportunities, Main Street Guthrie Center and Operation Smoke Alarm.

New Opportunities serves families, individuals and elderly residents of Guthrie County under income eligible programs by holding such events as a back to school drive for school supplies, Thanksgiving food baskets and purchasing Christmas gifts for children. They also have a food pantry and a clothes closet and offer energy assistance and a mentoring program for children, just to name a few.

Tiffany Steensen, who presented on behalf of New Opportunities, explained that the donation would be used to expand the holiday food basket program and purchase Christmas gifts for children. This year’s goal is to provide each child with a pair of new



AMANDA GIRRES | LAKE TIMES

Tiffany Steensen presents for New Opportunities at the 10 Squared Women of Guthrie County meeting on September 21.

clothes, shoes and winter clothing items.

The mission of Main Street Guthrie Center is “to be a catalyst for economic vitality, to promote historic preservation and to champion community partnerships in our downtown.” Dana Buster, who presented on behalf of the organization, told attendants that if Main Street received a donation from 10 Squared, half of it would be used to fund more free activities in Guthrie County and Guthrie Center, and the other half would be used to help restore the historic Williams Building, which the organization purchased earlier this year.

Jill Thomas presented for what the group called “Operation Smoke Alarm,” a recent project with the goal of providing fire alarms to families that do not have them in their homes. The project began after the May 15th house fire that took the lives of 12-year-old Melanie “Paige” Exline and 16-year-old Shakiah Cockerham. The home did not have smoke alarms.

10 Squared women members who have busy schedules but want to give back to their communities love this organization because you need not be present or put in a lot of hours to make a difference. Many members don’t attend meetings, but still write their checks quarterly. “This group is the laziest form of philanthropy...and I LOVE IT” said one member. However, for a member’s vote to count, they must be present at the meeting and all committed members are expected to write their quarterly checks, even if they can’t attend the meetings.

The group has reached its initial goal of one-hundred

members, but according to Kristen Crouthamel, “We don’t need to stop there. Some groups around the country have hundreds of members. The more members we have, the bigger impact we can make.”

The group has vowed to only nominate and donate funds to local organizations and groups who also vow to keep those dollars working right in our back yards, for Guthrie County projects and residents. “We want to reach all corners of Guthrie County, not just the communities along Highway 44” said Shannon-Neff Muell. “All three of the organizations we have donated to this year alone serve residents across the county in Adair, Stuart, Bagley, Bayard, Yale, Jamaica, Panora, Guthrie Center and others”. The organizations who previously received funding from the 10 Squared Women Group were the school Backpack programs (at Coon-Rapids Bayard, AC/GC, Panora and West Central Valley) and Guthrie County Helping Hands, a sub-organization of Habitat for Humanity.

Laura Smith said “I am relatively new to Guthrie County, and this was a great way for me to get involved in my new communities and get to know people.” She also commented that “we encourage the community to share our group in their social circles and to come to a quarterly meeting and bring a friend!” The next quarterly meeting will be Thursday, December 21st.

For more information about the group, you can visit their Facebook page at <https://www.facebook.com/10squaredwomengc>, or email them at 10squaredgc@gmail.com. Membership Forms and Frequently Asked Questions can be found on their Facebook page or by contacting them through Facebook or email.

Checklist for Helping You Choose a Financial Professional

For reasons likely to remain obscure, October 30 is Checklist Day. But while the origins of this observance may be a mystery, the value of checklists is clear: They help us organize our time and break large jobs into manageable steps. You can use a checklist for just about any significant endeavor – including the task of choosing a financial professional to help you achieve your important goals.

Here’s what such a checklist might look like:

- Find someone with the proper credentials. Make sure a prospective financial professional has the appropriate securities registrations.
- Find someone who has worked with people like you. You’ll want to seek out a financial professional who has experience working with people in circumstances similar to yours – that is, people of your financial status and with essentially the same goals and attitudes toward investing.
- Find someone who will communicate with you regularly. During the course of your relationship with a financial professional, you will have many questions: Are my investments performing as they should? Should I change my investment mix? Am I still on track to meet my long-term goals? Plus, you will

have changes in your life – new children, new jobs, new activities – that will affect your financial picture and that need to be communicated to your financial professional. Consequently, you need to be sure that



Dave Grove

whomever you work with is easy to reach and will be in regular contact with you. Many financial professionals meet with their clients at least once a year to discuss the clients’ portfolios and recommend changes, as needed, and also make themselves available, through phone calls and email, for any questions or concerns their clients may have.

• Find someone who will honor your preferences. Some financial professionals follow certain philosophies. For example, you might find one advisor who tends to favor aggressive investing, while another one might be more conservative. There’s nothing wrong with either approach, but you’ll want to be sure that your preferences take precedence in all recommendations and guidance you receive from a financial professional. And many professionals won’t express any of their own prefer-

ences at all, but will instead follow a course of action based on your goals, risk tolerance and time horizon.

Find someone connected to other professionals. Your investment plans don’t exist in a vacuum. Over time, you will likely need to integrate elements of your investment strategy with your tax and estate planning strategies. When this happens, you may find it advantageous to have a financial professional who can work with tax and legal professionals to help you meet all your needs in these areas.

• Find someone whose compensation structure is acceptable to you. Financial professionals get paid in different ways – through fees, commissions or a combination of both. Which method is best for you, as an investor? There’s no one “right” answer – but you will certainly want to understand exactly how your financial professional will get paid and how this pay structure will affect your interactions with him or her.

You may find this checklist to be useful when you interview financial professionals. Take your time and make sure you’re confident about your ultimate choice. After all, you’re hiring someone to help you reach your key goals, such as a comfortable retirement, so you’ll want to get the right person on your side.

Lake Panorama
TIMES
Your Friends ...
Your Neighbors ...
Your Newspaper

Gathering Table Open Fridays!
One of Travel Iowa's "99 Restaurants to Try in Iowa"
Farm Fresh Produce • Changing Menus • Live Dinner Music
LUNCH: 11 am - 1 pm
Walk-ins or Reservations welcome
DINNER: 5:30 - 8 pm
Reservations requested by 3 pm
–Amy Sivadge, Chef–
Henry A. Wallace Country Life Center
2773 290th Street, Orient • 641-337-5019 • www.wallace.org

HOLBROOK CONSTRUCTION INC.
• Excavating • Skid Loader Work
• Sanitary & Water • Trucking of Rock & Sand
• Tile Repair • Directional Drill
• Tree Removal
Call Rick Today: 641.431.0342

Culligan CLEAN WATER HOME™
Free Water Tests and Estimates.
Prevent water problems with Culligan water treatment
RENTAL OR PURCHASE
Steve 515-478-0600

Guthrie Center Appliance & Hardware

We have OVER 2300 movies to rent!
Open Mon. - Sat. 8am - 6pm
218 State St., Guthrie Center, IA
641-747-3973

ARBOR ARTISTICS TREE EXPERT COMPANY
OLD MASTERS NEIGHBORHOOD SERVICES
Complete Groundskeeping & Property Management
TREES:
• Removal & Stump Grinding/Mulching
• Pruning (Elevations, Shaping & Thinning) Cable & Bracing
• Pest & Disease Diagnosis & Treatment
• Consulting & Tree Inventory
Lawn & Garden / SHRUBS & HEDGES
• Mow • Trim • Shape • Weed & Feed
• Storm Damage • Fall Clean-Up
• Firewood • Hauling
FREE ESTIMATES
Bill Reese; ISA Certified
705 E. Church Street • Panora • 641-755-2140 or 515-943-0544
breesetrees77@gmail.com
Celebrating 35 yrs of Art, Science, Safety and Education in the Green Industry

DON'T LET DIRTY WINDOWS SPOIL YOUR PRICELESS VIEW!
Let us take care of keeping your windows clean.
Z TO A WINDOW CLEANING
ZAAVAN ANNEAR, OWNER

CALL TODAY! 515-298-9973
FULLY INSURED

Renovate your homeowners policy.
Great insurance. Low rates.
Remodeling your home can increase its value. Protect it by taking a new look at your homeowners insurance policy. Like a good neighbor, State Farm is there.*
CALL ME TODAY.

0901136.1 State Farm Fire and Casualty Company, State Farm General Insurance Company, Bloomington, IL

LET US DO THE COOKING FOR YOU!

Great Tasting Fresh Fried Chicken - Cooked to perfection with a unique taste and style. A family recipe and process that's been successful for over 50 years.
Available at your Panora
Hometown foods
601 E Main St • Panora, IA
(641) 755-2213

EXPRESS YOUR PERSONALITY!
Let the Professionals Take Care Of You and Your Eyes with Quality Eye Care and Eye Wear!
Eye Care Associates
Cassie Martinson, O.D. • James Koch, O.D. • Kyle Stalder, O.D.
102 E. Main • Panora • 641-755-3699

GOLF

Shackelford earns Junior Tour Player of the Year honors

Kolby Shackelford of Panora was named the Boys 14 15 division Player of the Year honoree with 5,880 points when the Iowa PGA Junior Tour released it's Player of the Year honorees.

Shackelford, a member of the Panorama state qualifying golf team last spring, is no stranger to the Player of the Year winner's circle as he was also the 2015 Boys 12 13 and 2013 Boys 11 & Under award winner. He played in 15 events this year and had five first place finishes including at one of the best Major Events on the schedule the 42nd PGA Junior Championship hosted by Ames G & CC. His other victories were at the Jester Park Junior, the Junior



Tour Mid Summer Classic, the Des Moines Junior and the Junior Tour Metro Classic hosted by Warrior Run GC. The Iowa PGA Junior Tour

Player of the Year point totals continued for 2017 in a “best of” approach; points are earned by a player in the top 15 tournaments that he or she participated. Anyone who competed for Player of the Year was required to be an Iowa Junior Tour member. At the conclusion of the season, the player with the most points acquired in their division is awarded this title. The age divisions included are: Boys 11 & Under, Boys 12 13, Boys 14 15, Boys 16 18, Girls 13 & Under, Girls 14 15, Girls 16 18.

Events are categorized in four groups: Major, Ace, Eagle, and Birdie. Major Point events are worth the most amount of points, then Ace, Eagle, then Birdie. There were 7 Majors, 7 Aces, 13 Eagles, 20 Birdies, and 7 local qualifiers for 42nd PGA Junior Championship (qualifiers are non point events). The 2017 Iowa PGA Junior Tour Player of the Year award recipients were honored at the All Star Pro Golf Awards Luncheon held on Tuesday, October 17 at Riverside Casino & Golf Resort.

TORI’S ANGELS RECEIVES DONATION



SPECIAL TO THE LAKE TIMES

Ten Squared Plus Men of Guthrie County recently donated \$12,000 to Tori’s Angels to be used specifically for assisting four children in Guthrie County. Receiving the check on behalf of Tori’s Angels is (from left) Bill Ridgley, Barb Bahde and Julie Dent-Zajicek. Ridgley said the Tori’s Angels Foundation usually puts out between \$4,000-\$7,000 per child per year.

LaVilla
mexican restaurant, inc.

COME CELEBRATE YOUR BIRTHDAY WITH US!

Bring 2 friends for lunch or dinner and you will receive a 52 oz Birthday Margarita! (your choice of flavor blended or on the rocks)
Purchase of 3 meals required for offer to be valid.

SPECIALS

Tuesdays, Thursdays & Saturdays
2 for 1 Regular & Flavored Margaritas
\$2.50 all Bottled Beer
\$1.00 Soft or Hard Shell Tacos (Ground Beef or Chicken)

Wednesdays & Saturdays
Kids Night: Kids eat from Kids Menu for only \$2 includes drink (with 1 Adult paid meal & drink)

Fridays
All Pitchers of Flavored & Regular Margaritas - Only \$14

ASK US FOR OUR 2 FOR \$22 SPECIAL!

CLOSED ON MONDAYS
641-332-2139

HOURS:
Tues.-Thurs. 11 a.m.-9:30 p.m.
Fri.-Sat. 11a.m.-10 p.m.
Sunday 11 a.m.-9 p.m.

104 South 3rd Street, Guthrie Center • Family Owned & Operated
Gift Certificates Available For Any Amount!

SHOPPING FOR A VEHICLE?

wciautos.com

LOCAL INVENTORY!

SAVE WITH THE SUN

SOLAR IS MORE COMPETITIVE THAN EVER

WE MAKE CUTTING ELECTRIC COSTS ACCESSIBLE TO EVERY INDIVIDUAL, BUSINESS, FARM, AND ORGANIZATION. OUR TURN-KEY SOLUTION SIMPLIFIES THE PLANNING, FINANCING, AND INSTALLATION PROCESS. WE WAKE UP EVERY DAY WITH A PASSION FOR SAVING PEOPLE MONEY AND BETTERING THE WORLD IN WHICH WE ALL LIVE. IF YOU THOUGHT GETTING SOLAR IS TOO COMPLEX, YOU HAVEN'T MET US.

— IOWA WIND AND SOLAR

REACH OUT TO IOWA WIND AND SOLAR REPRESENTATIVE JEREMY RIERSON AT JEREMYRIERSON@IOWAWINDANDSOLAR.COM OR BY PHONE AT 712-292-8220.

ELECTRIC CO-OPS COMMIT To Education

Guthrie County REC
A Touchstone Energy Cooperative

CO-OP MONTH | OCTOBER 2017

FRESH CLEAN CARPET FOR YOUR FAMILY

515-758-3856

Eric Wilson, Owner

- Residential & Commercial
- Upholstery Scotch Guarding
- Emergency Services Available
- Air Duct & Dryer Vent Cleaning
- Auto & RV's

Give your family clean carpets and fresh air every day. A healthy home begins with clean carpets. Call us today for a free quote.

WILSON CARPET & Air Duct CLEANING

No Job Too Small... Or Too Big! Over 21 years experience!

THE PORT
ON LAKE PANORAMA
RESTAURANT, INN AND TIKI BAR

FRIDAY NIGHT FISH FRY

\$8.95
+ tax per person

WINTER HOURS:
Wednesday - Saturday 5 - 9pm
Sunday 10 - 1pm.

641-755-4240 | experiencetheport.com
Follow us on Facebook! | 5405 Chimra Road, Panora

Welcoming new patients!

The providers at Mercy Panora Medical Clinic are welcoming new patients!

Hours of operation:
Monday–Friday, 8:30 a.m. to 5 p.m.
319 E. Main St., Panora
(641) 755-2121

Providers:
Eric Ash, M.D.
Tonia Erickson, ARNP
Amy Harland, PA-C

Mercy Clinics
PANORA MEDICAL CLINIC

DOT physicals are offered by certified providers.

PUBLIC NOTICE

**LAKE PANORAMA
ASSOCIATION
BOARD OF DIRECTORS
MEETING
AUGUST 22, 2017
LAKE PANORAMA
ASSOCIATION OFFICE**

The Lake Panorama Association Board of Directors met August 22, 2017, at 5 p.m., at the Lake Panorama Association Office. Board members present were Larry Babcock, Mary Jane Carothers, Gary Evans, Tom Jeschke, Mindy Larsen Poldberg, Charles Schnack, and Jim Spradling.

LPA Staff present: Brad Halterman, Danna Krambeer and John Rutledge.

Visitors present: Tom Hyde, Paul Nagel - LPA Members.

President Spradling called the meeting to order at 5 p.m.

Agenda Item 1 – Approval of the Agenda. Jeschke moved to approve the agenda. Motion seconded, carried unanimously.

Agenda Item 2 – Open Forum. Paul Nagel thanked the water safety committee and the board for considering all the members’ opinions and requests regarding the boat length. Nagel is in support of no increase.

Agenda Item 3 – Consent Agenda. Jeschke moved to approve the consent agenda. Motion seconded, carried unanimously.

Consent agenda to include:
a) LPA General Manager’s Report
b) Approval of minutes from 7.25.2017 LPA Board Meeting
c) Acceptance of the 07.31.2017 LPA LPN Consolidated Financial Statements
d) Confirm date and time of next LPA Board Meeting
e) Authorize correction re:

unrecorded 2006 re-plat of LPA plat 29, including deed to Gary and Jody Babcock
f) Accept 07.27.2017 LPA Water Safety Committee Minutes
g) Accept 08.14.2017 LPA Building Code Committee Minutes

Agenda Item 4a – LPN, LLC Board of Managers report. Acceptance of July 2017 LPN, LLC Board of Managers minutes.

Carothers moved to accept the July 17, 2017 LPN, LLC Board of Managers minutes. Motion seconded, carried unanimously.

Agenda Item 4b – Offer on Lot 6740, including under-road easement.

Patrick and Marilea Morris own lot 860 and would like to secure lot 6740 to ensure septic/lateral field options would be available as needed. A corresponding under-road easement is also requested as part of the offer. The land sales committee has reviewed the offer of \$10,000 and is recommending acceptance of this offer.

Jeschke moved to accept the offer on lot 6740 for \$10,000 and approve execution of an under-road easement, which is contingent upon boring under the road and a payment of LPA’s standard \$300 under-road easement fee. Motion seconded, carried unanimously.

Agenda Item 4c – Offer on lots 3059 and 3062 and right of first refusal on lot 3063. The buyers originally offered to purchase lots 3062 and 3063 for a lateral field to serve lots 3064 and 4533. The request was denied as LPA determined 3063 should be retained by LPA. The buyers then looked at 3059 and 3062 for lateral field use.

The perc test was acceptable on 3059 and 3062. The buyers would like to purchase those lots, and secure a first right of refusal on lot 3063, should LPA ever decide to sell it.

Evans moved to accept offer of \$15,000 for lots 3059 and 3062, to be combined, and to approve the execution of corresponding deeds, right of first refusal and other legal documents contingent upon buyer acceptance and LPA attorney’s review. Motion seconded, carried unanimously.

Agenda Item 4d – Offer on lots 1148 and 1155 and variance request to move a home into LPA subdivision. Mark Parker has made an offer on lots 1148 and 1155. Offer is contingent upon the ability to move an existing home onto the lots. Home is currently located at 1977 Highway 4, Panora, north of the Brethren church.

The board discussed the covenants, bylaws and rules regarding a house being moved into Lake Panorama and found no specific exclusion of this practice. However, the home does not conform to LPA building codes and requires a variance for roof pitch. In addition, LPA owns the roads and has the right to determine access options.

The board provided direction to the General Manager to obtain further information, including finished elevation drawing and more details on the logistics of the move.

The board discussed the lot purchase part of this offer, for lots 1148 and 1155. The board provided direction to the General Manager to review the lot purchase options with the buyer along with the discussions

regarding the house moving.

Evans moved to table Agenda Item 4d regarding the variance request to move a house into the LPA subdivision and the proposed purchase of the lots to the next meeting. Motion seconded, carried unanimously.

Agenda Item 5a - Water Safety Recommendation

(i) Ski boat length, pontoon boat length and horsepower limit
Water safety committee met July 27, 2017 and heard from a small group of members regarding the length and horsepower limits and approved a motion to recommend no changes in the current rule language on boat length or horsepower limits and to request the LPA board of directors include questions about the issues of ski boat length, pontoon boat length and pontoon outboard motor horsepower limits in the LPA fall 2017 membership survey.

Jeschke moved to approve the water safety committee’s recommendation, to implement no changes in the current rule language on boat length or horsepower limits, and to include questions about the issues of ski boat length, pontoon boat length and pontoon outboard motor horsepower limits in the LPA fall 2017 membership survey. Motion seconded, carried unanimously.

(ii) Jetski Shuttlecraft
Rutledge and Jerry Armstrong, chief of security, referred this issue to the water safety committee for review, as it is an unusual vessel. Research was done with Iowa DNR, and good guidance was provided.

Water safety committee minutes stated:

The topic of jetski shuttlecraft was reviewed by the committee. Guidance from the Iowa DNR had been received, which indicated the shuttlecraft would need to be separately registered as a non-powered vessel. If equipped with lights, DNR would allow the jetski shuttlecraft to be operated at night (unlike jetskis alone). Furthermore, clarification was provided that the combined capacity of the jetski and shuttlecraft would apply, provided the jetski and the shuttlecraft remained coupled. If uncoupled, the individual capacity of each would apply.

Committee discussion generally agreed with the guidance from Iowa DNR, and it was the consensus of the group that LPA treat these vessels in a manner consistent with Iowa DNR regulations for such craft. Rutledge noted this approach would result in shuttlecraft being charged for an LPA non-powered vessel sticker, which is equivalent to a kayak or canoe.

Motion Appleseth to require jetski shuttlecraft to obtain an LPA non-powered vessel sticker, with all other regulations being deferred to Iowa DNR for vessels of this nature. Motion seconded, carried.

Evans moved to require jetski shuttlecraft to obtain an LPA non-powered vessel sticker, with all other regulations being deferred to Iowa DNR for vessels of this nature. Motion seconded, carried unanimously.

Agenda Item 5b – Review of draft report regarding LPA reverse osmosis pilot plant study
Initial information received regarding the test pilot plant study was distributed to the board. Final test results will be received in the next couple of weeks. Overall results are very

positive and indicate a feasible option moving forward.

The board briefly discussed the pros and cons of this upgrade and what options would be available for financing the plan. The next step will be to look at the total cost numbers to implement the RO plan and research possible ways to finance the project.

Agenda Item 6 – Other Business – LPA Strategic Planning – Spradling asked the board members for information and feedback regarding strategic planning that was introduced at last month’s meeting. Spradling handed out some additional information regarding the strategic planning and some examples of goals the board could identify for strategic planning.

Rutledge reviewed the upcoming budget process and timing of the budget process. The LPN board of managers has provided an initial Capital budget for LPA to include in their planning of capital expenditures for 2018 and future years. The first draft of the capital budget will be presented at the September board meeting. The operational budget will be presented to the board at the October board meeting. The goal is to have both budgets approved at the November meeting.

Agenda Item 7 – Closed Session. The Board entered closed session at 6:10 p.m. to discuss legal matters and exited closed session at 7:25 p.m. With no further business, the meeting was adjourned at 7:25 p.m.

Danna Krambeer,
Recording Secretary
Mindy Larsen Poldberg,
Board Secretary

KAUTZKY TREE CARE LLC

Call Paul at 712-249-9725

• FREE ESTIMATES • TREE TRIMMING & REMOVAL
• STORM CLEAN UP • TREE PLANTING

ASH TREE TREATMENT

• Retaining Walls • Patios • Water Features • Planting

LICENSED • INSURED • EXPERIENCED • LOCAL REFERENCES

Goodwin & Son Painting, Inc.

Let Goodwin & Son beautify your home with a fresh new look!

One room or the entire house.

515-386-5282 or 515-370-1237 (cell)

Interior and Exterior 26 years experience

GOPHER & MOLE TRAPPER

Let Allen Pierce help get rid of those pesky critters!

Call 641-757-1101

FALL LAWN MOWER
MAINTENANCE AND SERVICE

Fall Mowing season has started, but DOES your mower?

SERVICE SPECIAL RIDING MOWERS
\$48.95 PLUS TAX
PUSH MOWERS
\$30.00 PLUS TAX

Bates
SMALL ENGINE SERVICE

206 E. Main Panora

WILBUR BATES SHOP: 641.755.3277
CELL: 641.757.1243

OPEN | M-F 7:30A-6P + SAT-SUN 8A-4P

DEPENDABLE BANKING FOR 95+ YEARS

Online or in line, we are trustworthy with your finances.

Trust FSB Yale with your finances and your future. Our team is experienced, trained and invested in your success.

ONLINE BANKING | MOBILE BANKING | FULL-SERVICE LOBBY
DRIVE-THRU | ATM | ACCOUNT PERSONALIZATION

Farmers State Bank

Growing Trust. Building Community.

201 Main Street | Yale, IA 50277 | 641-439-2221 | 877-439-2221
yalebankiowa@yalebankiowa.com | www.yalebankiowa.com

VENTEICHER ELECTRIC, INC.
HOME COMMERCIAL FARM

Servicing Guthrie Center and Panora areas for all your electrical needs.

641-332-2675 OR 641-755-3638

25+ years experience in agricultural, commercial, residential, industrial wiring along with trenching & boom truck services.



www.townandcountryhandymanexpress.com

*"Professional Repair Services,
No Job to Small"*

TO THE RESCUE!!!

- Light Electrical • Light Plumbing • Carpentry
- Door & Window Installation • Lockset Installed
- Drywall Repair • Toilet Replace/Repair • Roof Repair
- Sink & Faucet Replacement • Ceiling Lights & Fans
- Kitchen & Bath Remodeling • Garage Door Openers
- Installation of Appliances (including Garbage Disposals & Microwaves)
- Hot Water Heater Replacement • Walk In Tub Installation
- Deck & Dock Construction & Repair
- Other Home Improvements & Repairs

CALL US TODAY 515-24HANDY (515-244-2639)
Serving the Lake Panorama Area Fully Licensed & Insured




CREATE WARM MEMORIES

WITH A NEW HEATING SYSTEM.




RELY ON RUUD™

GET ENERGY STAR® PRODUCTS
and save on utility bills!



SAVE MONEY
with high-efficiency Ruud HVAC systems.



RUUD HEATING SYSTEMS



- ✓ RELIABLE HEATING
- ✓ QUALITY-BUILT
- ✓ HIGH-EFFICIENCY

2164 Hwy 25 • Guthrie Center (641) 332-2198

DOUG'S PLUMBING & HEATING

In keeping with its policy of continuous progress and product improvement, Rheem reserves the right to make changes without notice.

Got Radon?

Call the radon “problem solvers.”
Serving western Iowa for the last 16 years.




Radon Mitigation Service

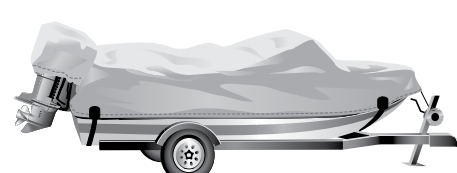
Stroeher

Elk Horn, Iowa • 712-773-4748 • 712-579-1461
www.radonsafehomes.com
email: stramit@metc.net

Now's the time to make those repairs you've been putting off.



Sails
Boat Covers
Lift Covers
Pontoon Canopies and Curtains



Quality canvas repairs for over 30 years.

JOHN BOYT INDUSTRIAL SEWING
3101 JUSTIN DRIVE • URBANDALE
515-270-7031
Toll Free 1-888-667-3744

LIBRARIES

FROM PAGE 2B

a number of children's books for the Historical Village," Koch says. "That led to the idea of a Little Free Library just for children's books."

This is the second Little Free Library for the Village. Jorgensen, the museum curator, was at Sandy Rhoten's garage sale in Panora last year when she saw the library box Rhoten had in her front yard. Rhoten was moving to Des Moines, and didn't plan to move the library, too. When Jorgensen expressed interest, Rhoten quickly donated it to the Village.

That first library carries the charter number 13322 and has its own Facebook page. It originally housed both adult and children's books. But with the new library mounted closer to the ground to house children's books, the original one now holds all adult books.

The Lippincott Library's charter number is 63102. It includes a plaque honoring Betty Lippincott and a favorite Garrison Keillor quote — "A book is a gift you can open again and again." The Library is installed near the back of the schoolhouse, with easy access from the main parking lot to the east. The original library is located near a smaller parking area on the north side of the Village.

Koch says her mother loved the Guthrie County Historical Village and would be pleased to be sharing books in such a special place. "Reading is truly a gift that lasts a lifetime, and we hope this will encourage many young readers," she says. "If anyone has extra children's books to share, I hope they will add them to the Lippincott Free Little Library."

For more information, visit www.littlefreelibrary.org.

Hole-in-One No. 10 at Panorama West

Doug Kopaska from Guthrie Center hit a Hole-in-One on October 1 at the Panorama West Golf Course in Panora.

Kopaska was using a 7-iron on the 144-yard Hole No. 7. Witness was Joe Kopaska.

The Hole-in-One was the tenth on the Panorama West course this season.

Serving Lake Panorama and surrounding area for over 29 years!



- Complete floating dock, lift and canopy starting at just \$12,000! Installed!!
- Entire dock system is floating, always stays level and fluctuates with water level.
- No need to pay barge fees to remove and re-install, if in protected coves.
- Constructed entirely of maintenance-free materials. Treated wood frame is also available.
- Full line of dock accessories: benches, ladders, cleats, bumpers, dock boxes, etc.
- Econo Lift Boat Hoists in marina starting at only \$4275! Installed!!
- Floating PWC lifts starting at just \$2050! Installed!

At L&N Dock and Lifts, customer service is and always has been our top priority for 29 years!



"Stay Afloat"



BOAT HOIST

62799 577th Street • Lewis, Iowa 51544
(712) 769-2550 • (800) 546-6985
www.LNDocks.com

Van Houten Barge Service

- Boat lift and dock installation, removal and repair
- Custom built cantilever docks
- Rip-rap and shoreline work

Customer Service is our #1 goal.
We want to get you boating as soon as possible.

--Call for free estimates--

Mark Van Houten
(515) 975-7016 or
(641) 431-4002



General Contractor

Kurt Duis-Owner
641-757-0099

- All aspects of home building
- Log homes
- Licensed home inspector

DUIS CONSTRUCTION

Leaving for the winter?



We've GOT you covered

Whether you're away for a weekend or an entire season, you can rest easy with smart home devices you can control right from your computer or smartphone.

Depending on your budget, we can help you find solutions to:

- Detect burst pipes
- Monitor with cameras
- Control door locks

- Automate home lighting
- Detect open/broken windows
- And much more!

Visit our Solutions Center at:
112 East Main Street
Panora, IA 50216
(641) 755-2600

We have solutions for every budget!



GCSB INVESTMENT CENTER

Connecting Communities

INVESTING IN YOU

Medicare Enrollment Options for 2017 – 18

Key Medicare enrollment periods are approaching. This fall and winter, there are three periods in which Medicare beneficiaries can either enroll or disenroll in forms of coverage. October 15 – December 7 is the initial open enrollment period.

Do you have to confirm Medicare enrollment at the Health Insurance Marketplace? No. If you have Original Medicare or a Medicare Advantage plan through an HMO or PPO, you are covered under the Affordable Care Act. Investigate the difference between Medicare and ACA.

Should you get Medigap coverage if you have Part A & B? Not necessarily. Analyze the coverage carefully to determine the

comprehensive coverage of Medicare Advantage versus Medigap.

What should you look for in a Part C plan? Scrutinize the out-of-pocket spending limit, the copays, and the co-insurance. Attractively low premiums might not tell you the whole story.

The Medicare Plan Finder can help you determine an appropriate Part D plan. Each Part D plan has its own list of approved drugs, which can change. It is vital to check up on your Part D plan each fall, as your plan could change.

Visit investgcsb.com to read this article in its entirety or contact Kristen for help in navigating your options.



Kristen Crouthamel, AIF®, Financial Advisor

GUTHRIE CENTER: 413 State Street • Guthrie Center, IA 50115
PANORA: 505 East Main Street • Panora, IA 50216

PH: 641.755.2799 • **CE:** 641.757.2737
EM: kcrouthamel@ibasecurities.com

InvestGCSB.com   

Securities offered through IBA Securities, a division of Broker Dealer Financial Services Corp. (BDFS), Member SIPC. Investment advisory services offered through Investment Advisors Corp., an SEC Registered Investment Advisor. Guthrie County State Bank and GCSB Investment Center are not affiliated with BDFS. NOT FDIC INSURED – NO BANK GUARANTEE – MAY LOSE VALUE.

SCHAFFER

ROOFING

Over 30 years of experience
Roofing, siding, windows, and gutters
Fully licensed and insured



PREFERRED CONTRACTOR



800-996-7321

www.schaferroofs.com

Residential and Commercial Roofing

DINING

AT NEW ASIAN RESTAURANT
IN DES MOINES,
EXPERIENCE IS KEY



Shirley Burke, who owns Heavenly Asian Cuisine and Lounge in Des Moines with her parents, presents a traditional Chinese tea ceremony.

By REBECCA MCKINSEY | Special to the Lake Times

For Shirley Burke, drinking tea is an art. It has carefully set steps; for instance, you dump the first batch. It's good for colds. It's great for women's health. And although Burke doesn't suggest you smoke, it's also good for your lungs.

When done correctly, drinking tea also is good for your soul, she said.

Burke's family owns Heavenly Asian Cuisine and Lounge, which opened Sept. 23 in West Des Moines.

It takes patience and time to learn to appreciate tea, Burke said. And yes, she plans to hold tea ceremony classes.

"Tea is a very essential household drink for China," Burke said. "In China, we don't just drink the tea — we also learn to relax and find inner peace through tea. It's truly an art."

And although the tea is worth trying at Heavenly — and the tea sold there isn't available anywhere else, Burke said — the food can't be overlooked.

The restaurant offers cuisines loyal to both the Sichuan and Gansu

provinces of China.

Some familiar dishes are available — Kung Pao chicken, sweet and sour chicken, beef broccoli.

But visitors to the restaurant also will find unique, traditional dishes they may never have encountered.

Small bites include sliced beef with chili sauce, golden sand shrimp — a heavenly choice, sesame ham, boiled quail egg and cucumber salad with a light, tangy dressing.

The restaurant's West Lake beef soup is made from premium beef and is a viable alternative to chicken noodle when you're looking for a dish that comforts.

Other choices of note include shiitake mushrooms with abalone, heavenly braised lamb, ma po tofu — with a kick that won't disappoint — and a heavenly grilled fish dish with spicy sauce.

The latter dish is intended to feed a small crowd, served with sauce that is used to coat side dishes once the fish is gone.

Again, it's about extending the experience with friends and family, Burke said.

Those who sample a variety of dishes will notice a surprising ingredient in many of them: cilantro. Unexpected at first, it quickly becomes addictive.

Heavenly's desserts are light and not too sweet; they include rice pearls in sweet fermented rice wine and fried sesame cake stuffed with a sweet red bean paste.

And whatever you order, it will be beautifully presented.

A full bar is offered at the restaurant as well.

The restaurant is located at 225 5th St. in West Des Moines. It is open for lunch from 11 a.m.–2:30 p.m. Tuesday through Sunday and for dinner from 4:30–9:30 p.m. Tuesday, Wednesday, Thursday and Sunday, and from 4:30–11:30 p.m. Friday and Saturday.

More information about the restaurant, including about classes that could be offered, is available on its Facebook page, Heavenly Asian Cuisine & Lounge.



Corner Stone
Landscaping
& Tree Care

Tyler Carney, Owner
Landscape Designer
ICPI & NCMA Certified • Member INLA



LANDSCAPING & SERVICES:

Custom Designing • Patios & Outdoor Living Spaces • Retaining Walls
Water Features Landscape Lighting • Fire Pits • Outdoor Kitchens
Planting of Trees, Shrubs & Perennials



TREE CARE:

Tree Removal • Tree Trimming • Stump Grinding
Cabling • Risk Assessment • Shrub Trimming
• Emerald Ash Borer Treatment



email: csl@windstream.net
641-742-3009 • www.csl-ia.com



Soft Flooring.
Premium Cushion.
Pure & Simple.



618 GREENE STREET, ADEL, IA
WWW.ARCHERHOMECENTER.COM